

Flinders University
Graduation Ceremonies

December 2023

MON

Congratulations to our newest alumni

On behalf of Flinders University, I extend my warmest congratulations to you, our fearless new graduates.

As a fellow graduate and now Chancellor of Flinders University, I can say from personal experience that your time at Flinders will serve you well into the future, wherever your lives may lead.

Today marks the closing of one chapter and the beginning of another filled with endless possibilities.

Flinders University was named after the intrepid navigator Matthew Flinders, a man of humble origins who knew his success would rest on the value of his deeds, writing “Since neither birth nor fortune have favoured me, my actions shall speak to the world”.

Like our namesake, Flinders graduates are fearlessly embracing the unknown to inspire people around the globe. Our graduates have gone on to change lives and change the world in many fields – from medicine, science, and engineering, to law, social sciences, and creative arts.

Now, as a graduate, you will go out into the world and continue this legacy, equipped with the skills and knowledge you need to leave your own unique mark.

It is my honour to welcome you to the Flinders alumni network of visionaries, changemakers and achievers that reaches around the globe. I encourage you to stay connected and access a range of opportunities and benefits, including lifelong learning, professional support and being part of a community in which you can share and celebrate your achievements.

As you move into a new chapter of your lives, please keep in touch, and let us know how your lives evolve. We will be watching your success and progress with great interest and pride.

I hope that you will always remember Flinders University and consider it a significant part of your life – not just today, not just over the past few years while studying, but forever.

You can also be assured that Flinders University will continue to grow and evolve to ensure you are always proud to call yourself a Flinders graduate.

My congratulations to you all.

John Hood
Chancellor



John Hood
Chancellor
Flinders University

The Mace

The silver ceremonial Mace was a gift to Flinders University from The University of Adelaide in April 1969. It represents much of the history and regalia associated with universities and their official ceremonies.



In medieval times, a mace was a heavy, often spiked, club used as a weapon in battle and at jousting matches. In the sixteenth century the mace came to be borne ceremonially as a symbol of protection of the monarch, and later as a general ceremonial staff of office.

Oxford University began using a mace for ceremonial occasions in the late sixteenth century and Cambridge University adopted a mace in 1626.

The Flinders mace was designed by Mr Gerald Benney of London, and is based on a heraldic double F for Flinders.

The head of the mace is textured on its outside surfaces and polished on the spindle parts. The crest of Flinders University is engraved on the head; at the lower end of the shaft, there is a smaller replica of the crest of The University of Adelaide and an inscription 'Given to The Flinders University of South Australia by The University of Adelaide 1969'.

The Flinders University mace was originally carried by the Registrar at graduation ceremonies. In recent years it has been carried by a selected graduate.

The Crest

The Flinders University Council adopted a coat of arms for the University on 16 December 1966.

The coat of arms consists of a shield bearing a radiant sun at the base surmounted by an open book on a blue background, with an extract from page 176 of Volume 1 of Matthew Flinders' *A Voyage to Terra Australis* printed on the open pages.

The shield is surmounted by a crest comprising a reproduction of Flinders' ship *Investigator* fully rigged, on a wreath of the University's colours of dark blue, pale blue and white.

The Crest was designed by Kevyn Graham Whisson.

In 2022, the logo was reimagined. Inspired by the ambition of our namesake and the words of our founding Vice-Chancellor Peter Karmel – "*Experiment and experiment bravely*" – Flinders University has always been ready to step away from the security of the familiar and forge new ways forward. As our journey continues, we are evolving our brand and logo to reflect our progress while honouring our past.

Our new aesthetic is designed to capture our strengths as a modern, innovative, inclusive and student-centred organisation.

Flinders University logo evolution



Acknowledgement of Country

Flinders University acknowledges the Traditional Owners and Custodians of the lands on which its campuses are located, these are the Traditional Lands of the Arrernte, Dagoman, First Nations of the South East, First Peoples of the River Murray & Mallee region, Jawoyn, Kurna, Larrakia, Ngadjuri, Ngarrindjeri, Ramindjeri, Warumungu, Wardaman and Yolngu people. We honour their Elders past, present and emerging.

Our vision for Reconciliation

Flinders University's collective vision is to foster an environment that recognises and embraces Aboriginal and Torres Strait Islander peoples, knowledges and cultures. This vision for reconciliation is grounded in the concepts of togetherness, reciprocity, and respect.

We respect and recognise the long-held philosophies, knowledges, research, strengths and contributions of Aboriginal and Torres Strait Islander communities in this country.

Flinders has committed to a second Innovate Reconciliation Action Plan to more deeply embed the learnings from our inaugural RAP across our campuses and communities, building on two decades of incremental advances in prioritising Indigenous engagement in higher education. We continue to work across our staff, student and alumni community to increase respectful recognition, knowledge and awareness of Aboriginal and Torres Strait Islander cultures, histories and contributions.

Explore our Reconciliation Action Plan at:
[Flinders.edu.au/rap](https://flinders.edu.au/rap)

Tiles are designed by Dr. Ali Baker and painted by Aboriginal and Torres Strait Islander students during Orientation week at Flinders University.



Congratulations – you are now a Flinders University graduate.

Today we celebrate not just the culmination of your hard work, but the spirit of fearlessness that carried you through this journey.

Your testamur tells the world that you are equipped with a body of advanced knowledge and skills that sets you apart, earned by your dedication, relentless hard work, and an unwavering commitment to your dreams.

The route to academic success is seldom simple or easy. Embarking on study is a big decision, and choosing what to study and where to study can set the course of one's life.

You've chosen wisely.

A Flinders degree is highly regarded, showing you've got what it takes to succeed at a university that is amongst the best in the world.

At Flinders University, we share our namesake's ambition and commitment to making a difference in the lives of those around us through the value of the work we do. From a quality education that transforms the lives of our students, to the world-class research that impacts communities around the world, Flinders is helping shape the future for us all.

Alongside your personal dedication, it's important to acknowledge the invaluable support of your family, friends, fellow graduates, and our staff who have helped you along the way. I encourage you to maintain those connections you have made at Flinders; many of them will stay with you for life.

As you step out into the world, remember that your journey doesn't end with graduation. Lifelong learning is the key to continued success. Your time at Flinders University has equipped you with the foundation, but it's up to you to build upon it.

Be fearless in pursuing knowledge and adapting to an ever-changing world.

During your time with us, you will have felt the power of our deeply held values of courage, integrity, innovation, and excellence. These values guide everything we do, and they will serve you well into your future.

Congratulations, graduates. Flinders is immensely proud of your accomplishments.

As you turn the page to the next chapter in your life, remember that your Flinders family will always be here to support you on your journey.

Professor Colin Stirling
President and Vice-Chancellor



Professor Colin J Stirling
President and Vice-Chancellor
Flinders University

Academic dress

The history of academic dress spans a period of more than 600 years from the earliest days of universities to present. The tradition of wearing academic dress continues in universities around the world.

At Flinders University, the wearing of a hood by the graduate to indicate their College is the principal feature. The hood of Flinders' academic dress is a dark blue. The colours of the hood's lining and piping are prescribed by the University and distinguish the different award and College.

Graduates who identify as an Aboriginal or Torres Strait Islander Australian are entitled to wear a stole of either Aboriginal or Torres Strait Islander colours, worn over the gown and under the hood.

List of hood piping colours

| | |
|---|--|
|  | Blue for College of Business, Government and Law |
|  | Orange for College of Education, Psychology and Social Work |
|  | Yellow for College of Humanities, Arts and Social Sciences |
|  | Green for College of Medicine and Public Health |
|  | Red for College of Nursing and Health Sciences |
|  | Purple for College of Science and Engineering |

Academic dress colours

Academic dress is made up of three parts; the **gown**, the **hood** and the **cap**. The cap is a black mortarboard with black tassel, unless graduating with a doctorate, where a black velvet bonnet with a black cord is worn.



Higher Doctorate

Gown: Red with coloured trim
Hood: Red lined with the colour of the discipline



Doctor of Philosophy (PhD)

Gown: Navy with red trim
Hood: Navy with red lining (no piping)



Doctorate (other than PhD and Doctor of Medicine)

Gown: Red with coloured trim
Hood: Navy with red lining and coloured piping



Doctor of Medicine, Bachelor of Medicine and Bachelor of Surgery, Bachelor of Clinical Sciences and Doctor of Medicine

Gown: Black with glove sleeves
Hood: Navy with light green lining (no piping)



Masters

Gown: Black with glove sleeves
Hood: Navy with pale blue lining and coloured piping



Graduate Certificates and Graduate Diplomas

Gown: Black with open sleeves
Hood: Navy with pale blue lining (no piping)



Bachelor

Gown: Black with open sleeves
Hood: Navy with white lining and coloured piping



Undergraduate, Associate Degrees and Associate Diplomas

Gown: Black with open sleeves
Hood: Navy with white lining (no piping)

Flinders University Alumni Awards

The annual Flinders University Alumni Awards acknowledge the significant contributions made by our graduates in their field, to the University or to the community locally, nationally and internationally. The awards include the Convocation Medal, Distinguished Alumni Awards and the Early Career Alumni Awards.

Congratulations to our 2023 recipients!

Convocation Medal

Cav. Maurice Crotti AO

Bachelor of Arts 1971

Professor Maria Makrides

Bachelor of Nutrition and Dietetics 1991, Doctor of Philosophy (Medicine) 1995

Distinguished Alumni Award

Professor Robyn Clark

Diploma of Applied Science (Nursing) 1986, Bachelor of Nursing 1994

Professor Bogda Koczwara AM

Bachelor of Medicine and Bachelor of Surgery 1990

Emily Korir

Graduate Certificate in Disability Studies 2016

Dr Michael C Smith

Graduate Certificate in Primary Health Care in Developing Countries 2012, Doctor of Philosophy (Biomedical Engineering) 2016

Professor Cassandra Szoeki

Bachelor of Medicine and Bachelor of Surgery 1999

Professor Simone Ulalka Tur

Master of Educational Studies 2002, Doctor of Philosophy (Education, Humanities, Law and Teaching) 2018

Early Career Alumni Award

Launched in 2020, the Early Career Alumni Award recognises the outstanding achievements and contributions of graduates in their early career (up to five years after graduating from an undergraduate or postgraduate degree).

This year we celebrate the achievements of Early Career Alumni Awardees:

Dr Mehrdad Aghamohamadi

Doctor of Philosophy (Electrical Engineering) 2022

Dr I Gusti Ayu Agung Dhani Dharmapran

Honours Degree of Bachelor of Engineering (Biomedical) 2016, Doctor of Philosophy (Medicine) 2020

Eloise Hall

Bachelor of International Relations/Bachelor of Business 2023

Madison Siegertsz

Bachelor of Creative Arts (Screen) 2020

**Who are the Flinders alumni that inspire you?
Consider nominating them for a Flinders
University Alumni Award in the 2024 mid-year
nomination round, open soon!**

Read more:

[Flinders.edu.au/alumni-awards](https://flinders.edu.au/alumni-awards)

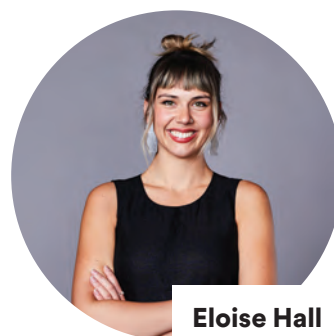


**Professor
Maria Makrides**

(Credit: Meaghan Coles)



Dr Michael C Smith



Eloise Hall

(Credit: Flashpoint Labs)

Congratulations!

Now that you have finished your degree at Flinders University, you have become a lifelong member of our Alumni Network. You join over 125,000 Flinders alumni across 130 countries who are finding their place, making their mark and making a difference around the world!

Leverage your degree long after graduation by tapping into this powerful network and making connections wherever your degree takes you.

**Scan here to follow
the reading of
the graduates names**



We're here for you

Keep your career on the move with year-round opportunities to develop your professional capacity, such as:

- Access to Flinders CareerHub for job listings and career support for two years
- Professional development opportunities
- Networking at a range of course, College and University events
- Mentoring a current student

- Postgraduate study or short courses
- Public lectures – in person, live streamed or recorded

These opportunities are promoted in our monthly alumni e-newsletter – keep an eye out for it in your inbox. And don't forget to update us if you move or change email address, that way we can let you know about events and opportunities in your location.



College of Business, Government and Law Alumni & Industry Networking Event



10 Years of Physiotherapy and Occupational Therapy Reunion

Celebrating Alumni Achievements

Flinders is honoured to count among its alumni:

1 Fields Medallist

6 Rhodes Scholars

30 Fulbright Scholars

350+ Australian Honours recipients

Get involved, give back

Access important career developing and defining opportunities by getting involved and giving back.

Share your time

Opportunities to hear from graduates like you are invaluable for current students. As your career develops, we welcome you to share your skills, knowledge and experience with students through speaking and mentorship opportunities.

Offer a placement

Remember your internship or work placement? When you're in the position to help a current student gain this valuable workplace experience, please reach out to us and we will help find the right student for your organisation.

Share your story

We all have unique life stories and we would love to hear about yours as you follow your career path. Over the next year, or in the next decade, inspire the next generation of students by sharing what your next steps were beyond Flinders University and how you achieved your career goals.

Be recognised for your achievements

Our annual Alumni Awards recognise the achievements of our graduates in their field and to the community. Our three categories span different stages of your career, from our Early Career Alumni Award and Distinguished Alumni Awards, to the prestigious Convocation Medal.

Connect with your fellow-graduates

Alumni networks and reunions are a great opportunity for catching up and maintaining connections with graduates from your degree, industry or region. Reunions are often held during milestone years and are usually instigated by an individual or group of graduates, with support from the Alumni Relations team.

Support life-changing research

You can play a powerful role in changing lives by supporting research at Flinders University. Researchers across the University are investigating eating disorders, cancer treatments, environmental impacts, healthy ageing, green energy and so much more. Learn how your support can have an impact across the community:

[Flinders.edu.au/giving](https://flinders.edu.au/giving)



**Scholarship recipient
Haidarr Jones
BMedia (Creative Arts) '16**

Support students in financial need

From failing junior high school and being homeless while studying his media degree, Haidarr Jones now enjoys a successful career in media production at the ABC thanks to the scholarship support he received at Flinders University. If you would like to support students who are facing financial hardship to reach their potential, please make a donation to the Matthew Flinders Scholarship:

[Flinders.edu.au/support](https://flinders.edu.au/support)

We look forward to staying connected

We are so excited for your next move after you leave Flinders University, but we also want to continue to engage with you, inspire you and help you reach your career goals into the future.

Staying connected is an important way for us to let you know about Flinders University Alumni Network activities, professional development opportunities, reunions and events in your location (whether that is Sydney, Shanghai or Stepney).

You can stay connected by updating your contact details whenever you move or change jobs. Fill in the online form or contact the Alumni Relations Team.

alumni@flinders.edu.au

+61 8 8201 7969

Update your contact details:

[Flinders.edu.au/update](https://flinders.edu.au/update)

Excellence in research

Research highlights

90% of our research is rated world-standard or above*

Research is a fundamental cornerstone of our mission as a University. Through research and research-led teaching, we build and develop the knowledge and capabilities that improve lives and enhance society.

Major research areas include

- Autonomous vehicles
- Clean technology
- Energetic materials
- Health and care
- Medicine and public health
- Labour and industry transformation studies
- Marine and maritime research
- Medical devices
- Nanotech and analytical chemistry
- Psychology and neuroscience
- Water and the environment

Research and creative endeavour have been at the core of Flinders University's identity since its inception, with our many Research Institutes and Centres, we have seen external research income jump 70% in four years and we are expecting for this trajectory to continue.

*Flinders rating 89.7%, rounded up to 90%. Excellence in Research for Australia, 2018

Make a difference with research that matters

Whether you want to explore a topic that interests you in-depth, create new knowledge or become an expert in your field, a Higher Degree by Research at Flinders will help you to make a difference.

At Flinders you'll be supported and mentored by specialist supervisors as you undertake your nominated research project. With the Doctor of Philosophy (PhD) or Masters by Research, you can choose the one that best suits your needs, and eligibility.

Learn more: flinders.edu.au/HDR

"Give everything a go. Have confidence in yourself and give everything a go. You don't know what you'll end up with. But it will probably be something great."

Alex Canty
Flinders PhD Candidate
in Psychology

New Health and Medical Research Building Opening 2024

Flinders University is investing in a world-class Health and Medical Research Building for Southern Adelaide. As a leading biomedical research facility, it will enable collaboration between researchers, healthcare and industry partners, translating world-class research into improved community healthcare outcomes.

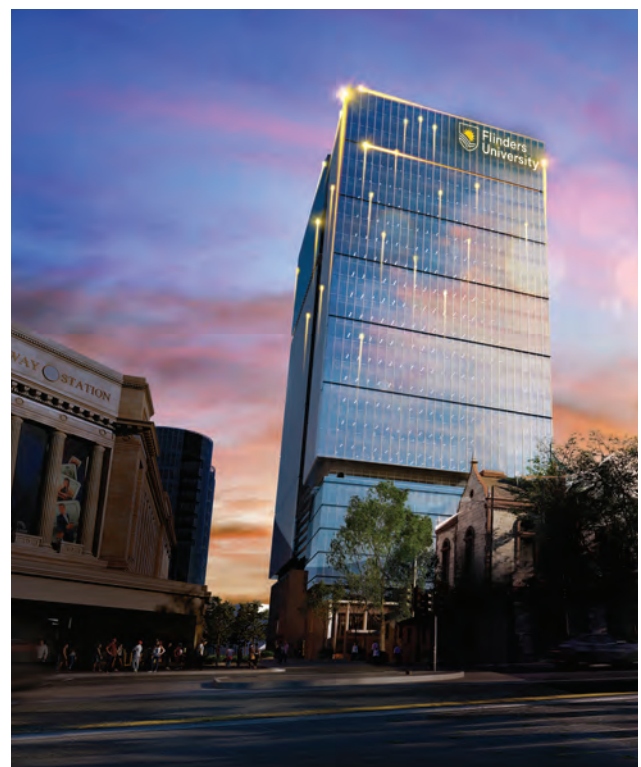
Learn more: flinders.edu.au/hmrb

Flinders' new city campus

Where potential meets possibility Opening Semester 1 2024

Surrounded by key arts, business, sports and government institutions, Flinders at Festival Plaza on North Terrace sits at the epicentre of Adelaide's most vibrant and connected cultural hub. Spanning eight levels, with multiple state-of-the-art teaching spaces, Flinders' new city campus is designed for flexible, adaptable learning, catering to an extensive range of study programs. No matter where you're from, Flinders at Festival Plaza invites students, thinkers, creators and collaborators to come, be part of our culture, and realise the possibility of your potential.

Learn more: Flinders.edu.au/festival-plaza



Graduation ceremonies

Adelaide Convention Centre

THURSDAY 14 December 2023

10:00am

College of Nursing and Health Sciences

3:30pm

College of Medicine and Public Health and

College of Science and Engineering

FRIDAY 15 December 2023

10:00am

College of Education, Psychology and Social Work

3:30pm

College of Business, Government and Law and

College of Humanities, Arts and Social Sciences

PROGRAM

Entry of Academic Procession

The Chancellor, Deputy Chancellors, Vice-Chancellor, Deputy Vice-Chancellors, members of the University Council and staff of the University will enter in academic procession.

Australian National Anthem

Indigenous Opening

Opening of Proceedings

Presentation of Graduates

Closing of Proceedings

Departure of Academic Procession

The Chancellor, Deputy Chancellors, Vice-Chancellor, Deputy Vice-Chancellors, members of the University Council and staff of the University will exit in academic procession

OFFICERS OF THE UNIVERSITY

Chancellor

Mr John Hood

Deputy Chancellors

Ms Elizabeth Perry AM

Mr Douglas Gautier AM

President and Vice-Chancellor

Professor Colin J Stirling

Deputy Vice-Chancellor (Students)

Professor Romy Lawson

Deputy Vice-Chancellor (Research)

Professor Robert Saint AM

Vice-President and Pro Vice-Chancellor (International)

Mr Sebastian Raneskold

Vice-President (Corporate Services)

Mr Mark Gregory

General Counsel & University Secretary

Mr Marc Davis

COLLEGE VICE-PRESIDENT AND EXECUTIVE DEANS

Business, Government and Law

Professor Michael Gilding

Education, Psychology and Social Work

Professor Deborah West

Humanities, Arts and Social Sciences

Professor Peter Monteath

Medicine and Public Health

Professor Jonathan Craig

Nursing and Health Sciences

Professor Alison Kitson

Science and Engineering

Professor Alistair Rendell

College of Nursing and Health Sciences

THURSDAY 14 DECEMBER 2023 10:00am

UP THE HILL PROJECT

The Up the Hill Project aims to provide an inclusive and supportive opportunity for people with a disability to experience a range of educational opportunities and activities at Flinders University.

The Up the Hill Project commenced in 1999 at Flinders University and is one of only two such programs in Australia supporting people with disability, including intellectual disability, at university.

The following students are today receiving their Certificates of Completion acknowledging their academic and personal development across a range of topics and disciplines over three years, as graduates of the Up the Hill Project.

William Bremner
Christopher Dyke
Ruby Nankivell
Everley Reeves

ASSOCIATE DEGREE IN HEALTH SCIENCES

Connor David Oxlad

DEGREE OF BACHELOR OF DISABILITY AND COMMUNITY INCLUSION

Mary Pamela Gill

DEGREE OF BACHELOR OF DISABILITY AND DEVELOPMENTAL EDUCATION

Rachel Renee Carbone
Jake Colin Dahms
Chloe Moroney
Aysha Siddika

HONOURS DEGREE OF BACHELOR OF DISABILITY AND DEVELOPMENTAL EDUCATION

Millie Ingham

DEGREE OF BACHELOR OF HEALTH SCIENCES

Tanya Simone Eckermann
Chung Hei Tse

HONOURS DEGREE OF BACHELOR OF HEALTH SCIENCES

Jeonghyeon Kim (First Class)

DEGREE OF BACHELOR OF HEALTH SCIENCES (HEALTH PROMOTION)

Tegan Amber Jefferies

DEGREE OF BACHELOR OF HEALTH SCIENCES (THERAPY STUDIES)

Aidan Michael McCabe

DEGREES OF BACHELOR OF HEALTH SCIENCES AND MASTER OF PHYSIOTHERAPY

Charity Nita Selleck

DEGREE OF BACHELOR OF HEALTHY AGEING

Rosslyn Margaret O'Dea

DEGREE OF BACHELOR OF HUMAN NUTRITION

Abbe Rose Chittleborough

DEGREE OF BACHELOR OF LETTERS (HEALTH)

Shanaiah Martini Ann Fernando
Johanna Palenschus

DEGREE OF BACHELOR OF MEDICAL SCIENCE (VISION SCIENCE), MASTER OF OPTOMETRY

Nyllah Danesh
Aayetan Khan
Medinah Khelwati
Anoushka Singh

DEGREE OF BACHELOR OF NURSING

Diwesh Adhikary
Shivani Arora
Sunaina Awal
Srijana B K
Jun Young Bae
Nita Banjara
Manita Basnet
Rangelmary Benny
Pratibha Bhandari
Sujata Bhandari
Phurpu Bhote
Anjana Bhusal Chhetri
Quang Nhat Nam Bui
Stacie Andrea Casoyla
Aakriti Chaudhari
Chi Lung Cheung
Yee Man Chow
Sarah Kate Copeland
Milan Dahal
Reena Dangol
Ruby Dangol
Shanti Dhakal
Samikchhya Dhakal Gautam
Asmita Dhungana
Srijana Dhungana
Sarita Dong
Ritu Gautam
Sharmila Gautam

Bina Ghimire
Sony Golay
Haitong Gong
Chantelle Margreta-May Gschwend
Ishwori Devi Gurung
Sachita Gurung
Sunita Gurung
Yangkita Gurung
Yuanyuan Huang
Manisha Jareju
Abhisekh Prasad Kalwar
Jyoti Kansal
Amerina Karki
Kate Karki
Kumari Karki
Riya Karki
Laxmi Katwal
Caroline Chepchumba Kemei
Sujata Khadka
Saliza Khadka Phuyal
Sabita Khanal
Rashmi Kharel
Geeta Khatri
Dohyeon Kim
Hongeun Kim
Pranjal Kumari
Priti Jyoti Lama
Sujata Lama
Sojin Lee
Fang Li
Ziqing Liang
Green Lim
Yunyang Lynx Lu
Rojisha Maharjan
Archana Mandal
Yizhou Mao
Kanchan Mukhiya Thapa
Pratikshya Nembang Subba
Pratikshya Nepal
Sangita Nepali
Wing Yan NG
Kennedy Mutisya Nzangi
Isanlose Joy Ohonyon
Amrita Pandey
Samixa Pandit
Pavitra Pant
Anupriya Pathak
Mira Paudel Khanal
Ruth Stefanny Perez Terrones
Priyanka
Rama Pudasaini
Jeni Pun
Quicksilver
Aastha Rai
Nisha Rajbhandari
Anupa Rana
Binu Rana Magar
Rojina Rasali B K
Raksha Rijal
Jihoon Sa
Manisha Sapkota
Shinder Pal Kaur
Namrata Shrestha
Pramila Shrestha

Santoshi Simkhada
Roshni Sirpali
Pardip Subedi
Sapna Sunar
Ana Janine Serrano Sunga
Aayushi Tamang
Sabanam Thapa
Sasmita Thapa
Thaneshore Tiwari
Swaroop Tolange
Maria Gracita Tolentino
Man Yu Tsoi
Catherina Tsuha De Biasi
My Hang Viet
Hui-Yu Wang
Jinghan Wang
Napaporn Yotharot
Shuang Yu
Yue Zhang
Yuerong Zhang
Emily Zheng

DEGREE OF BACHELOR OF NUTRITION AND DIETETICS

Ella Mae Kretschmer
Silvia Elizabeth Nyadeje Mubinya
Jasmine Jane Poole
Erin Marie Whitton

DEGREE OF BACHELOR OF SPEECH PATHOLOGY

Izabella Shaylee Linke
Zhuo Lin Tan

GRADUATE CERTIFICATE IN ACUTE CARE NURSING (CRITICAL CARE)

Kundai Mutsa Nancy Jamela

GRADUATE CERTIFICATE IN ACUTE CARE NURSING (EMERGENCY)

Kousar Mirzaei

GRADUATE CERTIFICATE IN ACUTE CARE NURSING (MENTAL HEALTH)

Durga Dulal Phuyal

GRADUATE CERTIFICATE IN PALLIATIVE CARE

Stacey Anne Freeling
Kelvin Casey Yabut

GRADUATE CERTIFICATE IN POSITIVE BEHAVIOUR SUPPORT

Deepa Azad
Alyssa May Lloyd-Jones

GRADUATE CERTIFICATE IN PRIMARY HEALTH CARE (AGED CARE NURSING)

Aishwarya
Chang Ge

College of Nursing and Health Sciences

THURSDAY 14 DECEMBER 2023 10:00am

GRADUATE CERTIFICATE IN PRIMARY HEALTH CARE (CHILD AND FAMILY HEALTH NURSING)

Abbey Barrett
Mui Gladigau

GRADUATE CERTIFICATE IN PRIMARY HEALTH CARE (DIABETES MANAGEMENT AND EDUCATION)

Carolyn Hollingworth
Preeti Punni
Archana Soni

GRADUATE DIPLOMA IN APPLIED GERONTOLOGY

Anastasia Economou
Sheena Mohanachandran Vasantha Kumari

GRADUATE DIPLOMA IN NURSING (CHILD AND FAMILY HEALTH)

Kaylee Sarah Gray

GRADUATE DIPLOMA IN NURSING (CRITICAL CARE)

Stephanie Jean O'Brien

GRADUATE DIPLOMA IN NURSING (DIABETES MANAGEMENT AND EDUCATION)

Daizy Chowdhary
Jane Alison Sladic

GRADUATE DIPLOMA IN NURSING (EMERGENCY)

Ratesh Vimal Prasad
Kamalpreet Suaan

GRADUATE DIPLOMA IN NURSING (MENTAL HEALTH)

Dorcas Ganda
Tonya Elizabeth Heyes
Narayan Kumar Khadka
Loice Makami
Carolyn Adhiambo Omenda
Sarah Faith Akinyi Owich
Susmita Rimal

DEGREE OF MASTER OF AUDIOLOGY

Xiaonuan Hu
Yiwen Lu
Weijiao Sun

DEGREE OF MASTER OF CLINICAL REHABILITATION

Rachel Elizabeth Davis

DEGREE OF MASTER OF CLINICAL REHABILITATION (NEUROLOGICAL PHYSIOTHERAPY)

Tegan Evelyn French
Nicholas William Kershaw

DEGREE OF MASTER OF DISABILITY POLICY AND PRACTICE

Gillian Mary Baldwin
Kathryn May Baylis
Susan Louise Goodall
Maria John
Demi Martin
Alana Poletta
Mohammed Noor-E-Alam Siddiquee

DEGREE OF MASTER OF NURSE PRACTITIONER

Bianca Piantedosi

DEGREE OF MASTER OF NURSING (COURSEWORK AND RESEARCH)

Kim Maree Mccristell
Jacinta Helen Stone

DEGREE OF MASTER OF NURSING (DIABETES MANAGEMENT AND EDUCATION)

Sifundo Mpatiwa
Brenda Noweka

DEGREE OF MASTER OF NURSING (GLOBAL HEALTH CARE)

Liby Abraham
Trudy Louise Perry
Angel Mary Gold Thangaraj

DEGREE OF MASTER OF NURSING (MENTAL HEALTH)

Sunita Bhatta
Alice Kere
Grace Waithera Muthoni
Carolyn Adhiambo Omenda
Joanna Joy Pallot
Suresh Chandra Paudel
Adrian Reynolds
Leslie Sikala

DEGREE OF MASTER OF NURSING (PRIMARY HEALTH CARE)

Nga Yin Chik

DEGREE OF MASTER OF NUTRITION AND DIETETICS

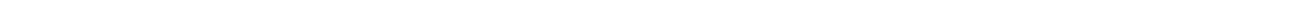
Ashleigh Kate Schneider

DEGREE OF MASTER OF OCCUPATIONAL THERAPY

Nathan Graeme Turner

DEGREE OF MASTER OF PALLIATIVE CARE

Jamie Lee Parker
Gloria Gaye Pavey



DEGREE OF MASTER OF PHYSIOTHERAPY

Caitlin Chan-McLeod
Samantha Hui Wen Chong
Flavia Fazani Lijo
Paul Le
Mariko Nicole Moriyama
Heather Yates

DEGREE OF MASTER OF SPEECH PATHOLOGY

Wing Sze Ho
En Genevieve Low
Jingzhi Shi
Lih Yin Tan

DEGREE OF DOCTOR OF PHILOSOPHY

Anne Mette Noerby Adams

Principal Supervisor: Professor Tiffany Conroy

By thesis entitled:

Nonpharmacological prevention, minimisation and management of agitation in the adult intensive care unit. Development of preliminary Danish and Australian patient-centred clinical practice guidelines

Patient agitation is common in the intensive care unit. The behaviours are distressing and can be dangerous for patients, staff and families. Due to the side effects of medication, clinicians are encouraged to use non-drug strategies to reduce patient agitation. However, there are no guidelines on what non-drug strategies to use. Therefore, this study aimed to develop clinical practice guidelines for non-drug prevention, minimisation and management of agitation in Danish and Australian adult intensive care units. A secondary aim was to identify the implications of developing guidelines across two countries. Through three study phases, including stakeholder consultation, systematic reviews and a Delphi study, this study identified 63 guideline recommendations, forming a new model of care for agitated patients in the intensive care unit. This study found many advantages of developing guidelines across countries and provides practical advice on how this can be done in rigorous and ethical ways.

Oluwaseyifunmi Andi Agbejule

Principal Supervisor: Professor Raymond Chan

By thesis entitled:

Enabling Health Professionals to provide effective self-management support for cancer-related fatigue

Cancer-related fatigue (CRF) is one of the most common and distressing symptoms experienced by people diagnosed with cancer. Managing CRF requires individuals to adopt a range of self-management behaviours, like increasing physical activity and exercise. To make these lifestyle changes cancer survivors require support from their healthcare teams. However, clinicians often struggle to provide adequate support due to a lack of clear guidance. This research developed an international, evidence-based, guidance framework of core practices required by clinicians to deliver self-management support to those experiencing CRF. The research also examined supportive care sessions to understand how self-management support practices are accomplished in a real-world setting. Findings suggest clinicians should initiate discussions about CRF early during consultations, and clearly introduce the self-management support agenda. Summarising patients' concerns throughout a consultation can also help clinicians to maintain a focus on CRF management, and connect divergent conversations back to the topic of CRF support.

Md Abdul Ahad

Principal Supervisor: Associate Professor Yvonne Parry

By thesis entitled:

Understanding the Prevalence and Impact of Maltreatment of Child Labourers: A Mixed-Method Analysis in the Context of Rural Bangladesh

Child labour maltreatment is a global health phenomenon. This study explored the prevalence, risk factors, and adverse psycho-social health outcomes of maltreatment of child labourers. This mixed-method study found that psychological maltreatment is highly prevalent among child labourers followed by physical maltreatment, neglect and financial exploitation. Child labourers are more likely to suffer from maltreatment as a result of their extended working hours, low wages, vulnerable living arrangements, and health hazards. A child's risk of experiencing maltreatment can be influenced by their parent's income and employment status, their experiences of early childhood maltreatment, and their land ownership pattern. Physically and psychologically victimized child labourers suffer from internalised and attention-associated psycho-social difficulties. This study is an original, significant, and timely contribution to the field of research. The findings suggest that further research is needed in order to guide policy makers to eradicate this public health problem.

College of Nursing and Health Sciences

THURSDAY 14 DECEMBER 2023 10:00am

Langduo Chen

Principal Supervisor: Professor Lily Xiao

By thesis entitled:

Exploring the care needs of stroke dyads in hospital-to-home transition from perspectives of stroke dyads and health professionals

Stroke is a brain injury and a leading cause of disability. Hospital-to-home transition is a challenging period for stroke dyads (people with stroke and their caregivers) to take charge of care due to shortened hospital stays and complex care needs. Although stroke dyads demonstrate dyadic interdependence in the transition, few studies have investigated their individual and dyadic care needs during the transition. This study explored stroke dyads' care needs and expectations during the transition from the perspectives of stroke dyads and health professionals. Stroke dyads were interviewed before hospital discharge and at 3 and 6 months after discharge. Focus groups and interviews were used to collect data with health professionals. Findings support a dyad-centred approach to hospital-to-home transition care that emphasises collaboration and continuity of care across different care settings and service providers. Further studies are warranted on the feasibility and effectiveness of a nurse-led, stroke-specific hospital-to-home transition care framework.

Abdullah Hasan

Principal Supervisor: Associate Professor Yvonne Parry

By thesis entitled:

Studies to explore the association between health-related behaviours and HbA1c among Kuwaiti young people at risk of T2DM

Over the last 20 years, the incidence of type 2 diabetes in adolescents and young people has increased. This growing burden presents an even greater risk of younger generations in Kuwait developing type 2 diabetes. However, to address this problem, it is imperative to identify the age at which the risk of type 2 diabetes begins so that stakeholders and policymakers can develop and improve their guidelines and protocols to provide health education and spread awareness. This study investigated the current situation regarding prediabetes and type 2 diabetes among the at-risk population in Kuwait. Young Kuwaitis have a high prevalence of prediabetes and type 2 diabetes compared to regional and international countries. Obesity and daily screen time both significantly influenced the mean blood glucose levels among the participants. The results from this study provide further evidence that will be used to improve the health outcomes for young people in Kuwait.

Dylan Shaun Hicks

Principal Supervisor: Professor Claire Drummond

By thesis entitled:

Force-velocity profiling in jumping and sprinting actions: Exploring the utility to enhance performance in individual and team sport populations

From a biomechanical perspective, to enhance sport performance it is crucial to quantify the mechanical aspects that govern human movement. Field-based force-velocity profiling aims to provide valuable data for training practices without the need for laboratory-grade technology. However, limitations in this biomechanical research exist across various sports thereby requiring exploration from theoretical, conceptual, and practical perspectives. The thesis consists of seven papers, published from 2021 to 2023, which present biomechanical data gathered from team and individual sport populations. This research evaluates the effectiveness of a macroscopic inverse dynamics approach to modelling biomechanical characteristics during jumping and sprinting actions to guide coaching practices. This study has made notable advancements in applied sports biomechanics, offering new insights into the application of mechanical profiling. This work is original, significant, and carries substantial implications for coaches and sports biomechanists who strive to enhance physical performance and mechanical characteristics through training and physical preparation strategies.

Huijing Jin

Principal Supervisor: Associate Professor Amanda Muller

By thesis entitled:

A Comparison of the Phonological and Morphological Awareness between Mandarin and Mandarin / Korean Speakers on English Language Learning

The research investigates Korean-Mandarin bilinguals' phonological and morphological awareness compared to Mandarin monolinguals. It proposes that bilinguals have more advantages in English phonological and morphological awareness than monolinguals. Also, it presented the differences and interconnections among three languages, Mandarin, Korean and English, from the aspects of phonology and morphology and language transfer within the three languages. The results of English phonological and morphological awareness ANCOVA showed that bilinguals performed statistically better than Mandarin monolinguals. Bilinguals have benefited from their previous knowledge of Korean compared to Mandarin monolinguals, indicating advantages for English learning. The research aspired to arouse teachers' and students' awareness of trilingualism, especially in teachers' understanding of English as a third language learners' linguistic background. It may further influence teachers' teaching strategies in the EFL classroom. The theoretical framework in the research drew on trilingualism and cross-linguistic transfer in third language acquisition.

Winfrida Wilfred Mwashala

Principal Supervisor: Professor Diane Chamberlain

By thesis entitled:

Early Warning Signs to Identify Vulnerable Children at Risk of Deterioration in Lower and Middle-Income Countries

Adverse Childhood Experiences Associated with Multidimensional Childhood Poverty are a significant public health problem, with acute and chronic health impacts among vulnerable children. Several studies have indicated that these children are invisible in Primary Health Care and community social support services. This thesis investigates, key issues affecting the health and social issues of vulnerable children and explores the available measures to identify vulnerable children exposed to Adverse Childhood Experiences associated with Multidimensional Childhood Poverty, in both primary health care and community settings in Lower and Middle Income countries such as Tanzania. The thesis consisted of four multiphase research projects using the transformative sequential mixed methods research design to develop the Vulnerable Children Early Warning Instrument, which will rapidly identify vulnerable children exposed to Adverse Childhood Experiences associated with Multidimensional Childhood Poverty using clinical observation measures for use by frontline workers in both Primary Health Care and community social support services.

Lynette Kaye Rabbetts

Principal Supervisor: Associate Professor Ann Harrington

By thesis entitled:

Finding balance as an invited guest: Registered Nurses lived experience of providing home-based palliative care in rural communities

My phenomenological study into the lived experience of Registered nurses who provide home based palliative care in rural community delivers evidence not previously explored in- depth in Australia. The aim of my study was to understand these lived experiences. The 16 Registered nurses who participated in this study reported that living and working in a rural community afforded them some unique experiences. Experiences unlike working in an hospital care setting or metropolitan area. Living in a rural community was foundational in the professional and personal lives of participants. As they entered each home as invited guests within their professional role this status influenced how these Registered nurses provided support. This study informs future government policy providing insight into the support required by Registered nurses who are providing people living with a terminal illness the opportunity to die at home in their own rural community should they wish to do so.

Susan Elizabeth Smith

Principal Supervisor: Dr Anita De Bellis

By thesis entitled:

Pushed to the fringe of society: vaccine hesitancy in parents and pregnant women

Immunisation plays a major part in protecting pregnant women and children against disease. However, vaccine refusal persists and has become more evident since the global pandemic. This research identified a critical gap in the knowledge of timing and influences on vaccine decision-making. This thesis investigated the influences on vaccine decision-making amongst parents and pregnant women including online via social media. It extended knowledge of what it is like to be vaccine hesitant including the marginalisation experienced, and identified factors that influence vaccine refusal. Findings from this research confirmed that healthcare professionals are a trusted source of information with a vital and timely role to play in educating parents and pregnant women about the safety and efficacy of vaccines. This work is original, significant and relevant given the circumstances under which this research was conducted, a global pandemic, as well as the impact vaccine refusal can have on women and children.

Stephen Ching Tao Yu

Principal Supervisor: Dr Lindy King

By thesis entitled:

Exploring the influence of an Australian healthcare organisation-initiated education program

Reports of suboptimal care from an Australian healthcare organisation raised concerns about a disconnect between healthcare professionals' practices and the organisation's patient care values. These concerns led to the conception, development and implementation of an education program called the Exceptional Care Education Program (ECEP). The ECEP sought to inform healthcare professionals of the organisation's vision and values with the goal to achieve more effective healthcare practices. This study explored the development of the ECEP and its influence on the organisation's clinical administrative and healthcare professional participants' approach to healthcare delivery. The findings indicate that values presented in the ECEP aligned with many of the participants' existing healthcare values. However, the approach taken to develop and deliver the ECEP did not influence their clinical practices. This study confirms that an educational healthcare improvement strategy of this kind requires close collaboration between the leadership team and clinical staff who deliver the care.

College of Medicine and Public Health

THURSDAY 14 DECEMBER 2023 3:30pm

DEGREE OF BACHELOR OF MEDICAL SCIENCE

Riley Ethan Grundy
Kimberly Hancil
Amer Hasan
Samantha Jayde Ligertwood
Jordan Amber Muir
Eiman Ghias Najib
Joanne Marie Rea
Keanna Marie Sagpan
Julia Severin
Alex Sredojevic
Reeshen Bevan Thulkanam
Mohammad Bassam Zaid

HONOURS DEGREE OF BACHELOR OF MEDICAL SCIENCE

Imanthi Tharaki Illeperuma (First Class)

DEGREE OF BACHELOR OF MEDICAL SCIENCE (LABORATORY MEDICINE)

Keanna Marie Sagpan

DEGREE OF BACHELOR OF MEDICAL SCIENCE (VISION SCIENCE)

Alex Sredojevic

DEGREE OF BACHELOR OF PARAMEDIC SCIENCE

Alyssa Jayne Clohesy
Lucas Fox
Sebastian John Tonkin
Madeline Rose Williams

DEGREE OF BACHELOR OF PARAMEDICINE

Hawa T S Kh Sh Al-Anezi
Thomas Mills
Shane Roach

GRADUATE CERTIFICATE IN CLINICAL EDUCATION

Gaylea Maria Fritsch
Amy Jean Ryan

GRADUATE CERTIFICATE IN COUNSELLING (BEHAVIOURAL HEALTH)

Keisha Danielle Wall

GRADUATE CERTIFICATE IN HEALTH PROMOTION

Sophie Messent

GRADUATE CERTIFICATE IN PUBLIC HEALTH

Michael James Jardine

GRADUATE DIPLOMA IN CHRONIC CONDITION MANAGEMENT

Amanda Sally Clark

GRADUATE DIPLOMA IN PUBLIC HEALTH

Edward William Pascoe

DEGREES OF BACHELOR OF CLINICAL SCIENCES AND DOCTOR OF MEDICINE

Angelo Morcos Guergues Halim Abdelmalek
Melissa Ayyildiz
William David Bessell
Jia Yi Alicia Boey
William Burden
Reuben Yang Chua
Amelia Margaret Dadd
Rishabh Goyal
Lorraine Kit Ying Ho
Mary Italia Iengo
Fatih Jamal
Joseph Hyunjoon Jang
Midhun John
Natalie Georgia Kanter
Teng Ann Michael Khoo
Shu Yan Elizabeth Koh
R Raveen Kumar
Amy Olivia Langdon
Matthias Wei-Ern Lim
Shee Teng Lim
Sean Nicholas Wen Jie Loh
Robin Lu
Zheng Joel Ng
Amirhossein Norozi
Brian Sunghyun Oh
Reshma Kaur Selvaruben
Suraj Shukla
Reh Tze Rachel Soh
Kiara Song
Jia En Clara Tan
Phoebe Jing Yun Tan
Ryan Eng Ming Tay
Joanne Thao Nguyen Thai
Jenny Tran
Madeleine Kim Trinh
Than Thar Tun
Ubaid Ur Rehman
Alysha Jin Jin Vuong
Jacob David Wilson
Jason Wong

DEGREES OF BACHELOR OF CLINICAL SCIENCES AND DOCTOR OF MEDICINE WITH DISTINCTION

Cassandra Grace Larobina

DEGREE OF DOCTOR OF MEDICINE

Daniel Carson Adair
Shems Al-Murieb
Jonathan Leigh Beacham
Samuel Christopher Bradley
Cassie Annaliese Cameron
William Louis Chapman
Katherine Elizabeth Constance
Mason Henry Crossman
Tracey Robin Davison
Jordan Evens
Joseph John Fantasia
Kelly Lee Ferguson
Ben Alexander Flower
Raif Ganni

Jack William Gloyn
Chelsea Louise Gosden
Hao Guo
Joshua Raymond Hassan
He Huang
Sahima Jafari
Rachel Aileen Lipert James
Hugo Thomas Edward Keller
Zida Liu

Kevin Lu
Matilda Rose Lyons
Alexander Peter MacAdam
Maryam Mahmoud
Justin Paul Martin
Christine Natasha Mausolf
Laura Elizabeth McEntee
Tara Elaine McFadyen
Kaelee Lisabeth McKay

Izak Nel Mentz
Scott Edward Johann Milton
Nicholas John Morfidis
Elizabeth Morgan
Maxim Nagorny
Tyler-Brooke Newman
Ryan Gerard Oliveiro
Eric Chong Myung Ong
Kimberley Yun-Lin Pang

Gabriel Orion Patston-Gill
Benjamin Timothy Piotrowski
Prateek Raonta

Akash Dharmendrakumar Rathod
Zachary Ryan Rodrigues
Matthew David Djuardi Sanderson

Joshua Michael Satz
Angeline Zyemmund Seow
Scott Shaw

Patrick Sheridan
Abdullah Sherifdeen
Lucia Maria Antonietta Silvestri

Janell Crystal Sitoh
Toby Caleb Skewes
Kit Alexander Smith

Martin James Stephens
Isobel Emma Templeton
Jordyn Richard Tomba

Huu Hien Antony Tu
Daniel James Vale
Inaki Voelcker Sala

Hanru Wang
Andrew James Robert Waters
Shannon Lea Waters

Beatrice Lottie Webb
Jeffrey Weng
Daniel Young

DEGREE OF DOCTOR OF MEDICINE WITH DISTINCTION

Keshani Shakila Alagiyage
Kurt Magnus Bierlein
Nicholas John Brummer
Vedas Gyanprakash Das
David Francis Della
Samuel George Handshin

Ella Julia Harrison
Hannah Marie Lewis
Alexander Chan Wei-Ming Mesecke
Sohel Usman Modan
William Peter Molloy
Jack Liam Tierney
Vincent Clark Vidanes
Jim Zeng

DEGREE OF MASTER OF BIOTECHNOLOGY

Daniel Carrillo Baez
Ratnakinnera Kode
He Lin
Tien Thanh Nguyen
Shivangiben Manank Panchal
Thi Giang Tuyet Pham
Antonio Pupulin

DEGREE OF MASTER OF CLINICAL EDUCATION (BY COURSEWORK)

Natasha Lethorn
Jane Martin
Brandon John Lee Stretton
Lian Peng Yee

DEGREE OF MASTER OF COGNITIVE BEHAVIOUR THERAPY

Dahlia Enoch
Lisa Jo-Anne Hagarty
Evans Tonderayi Maringa
Chung Oi Tina Wong

DEGREE OF MASTER OF PUBLIC HEALTH

Sathitha Udani Adhikary
Amandeep
Mealea Em
Danica Mariel Guevarra
Tiana Hua
Kelechi Nene Candy Ibeakanma
Alec Jackson
Ishita Lath
Melanie Faye Dalupang Marquez
Meron Mesghinna
Kainat Nazir
Shanti Michelle Omodei-James
Edward William Pascoe
Nikita Radford
Tayla Brittany Roberts
Aidi Shuai
Sukhdeep Kaur

DEGREE OF MASTER OF REMOTE AND INDIGENOUS HEALTH

Marika Forsyth

College of Medicine and Public Health

THURSDAY 14 DECEMBER 2023 3:30pm

DEGREE OF DOCTOR OF PHILOSOPHY

Dennis Asante

Principal Supervisor: Dr Vivian Isaac

By thesis entitled:

Towards understanding the chronic healthcare needs and health services utilisation of older adults in rural South Australia

Population ageing has become a significant demographic feature across the world. Although Older adults are recognized for requiring a range of services, often, health planners and practitioners have limited information about this vulnerable subpopulation, particularly those in rural communities to design targeted services to meet their complex needs. This thesis sought to contribute knowledge by examining the factors of services use by older adults with complex health conditions and understand unmet needs, barriers to, and facilitators of care access in rural areas. This study has shown that physical and mental conditions are independently associated with higher health services use, however, rural older adults underutilize specialists' care services, particularly mental care services. Where available positive provider attitudes, personal self-efficacy, and social support facilitated timely and appropriate health service use. Overall, the study's findings can inform the formulation of programs aimed at promoting health and well-being for older adults in rural environments.

Saoirse Clare Benson

Principal Supervisor: Professor David Lynn

By thesis entitled:

Characterising the mechanisms through which the microbiota influences immune responses to vaccination in early life

Antibody-mediated responses are highly variable between individuals and different populations. In mice, antibiotic-driven dysbiosis in early-life leads to significantly dysregulated immune cell responses to vaccines that are routinely administered to infants worldwide. To investigate whether this is also the case in infants, we established the AIR study to assess the effects of antibiotic exposure on the infant gut microbiota in a cohort of 226 healthy infants. Immune profiling revealed that infants exposed to intrapartum antibiotics had a modest reduction in cells associated with protection from allergy compared to unexposed infants. I also found that germ free mice, with no microorganisms living in or on them, had impaired antibody responses to the PCV13 vaccine compared to normally colonised mice. Comprehensive immune cell analysis that germ free mice had significantly impaired germinal centre formation after PCV13 vaccination. My data suggest that microbiota-targeted interventions may be beneficial to support optimal responses to vaccination.

Andrew James Blyth

Principal Supervisor: Professor Briony Forbes

By thesis entitled:

Investigation of the Mechanism of Action of IGF-II binding to the IGF-1R and IR-A and How Signalling Pathways are Preferentially Activated

The insulin like growth factor (IGF) system is essential for regulating metabolic and mitogenic signaling in mammalian cells. This system is commonly dysregulated in cancer. In particular, IGF-II and its receptor are overexpressed. The overall aim of my thesis was to better understand residues of IGF-II that are responsible for structural integrity and stability. Also, I aimed to further interrogate the mechanism of IGF-II action through understanding how signaling pathways are preferentially activated. To achieve these aims I introduced mutations into IGF-II to determine the effect on structure and function. In addition, I introduced novel binding mechanisms into IGF-II based on findings from several invertebrate insulins. Characterisation of these IGF-II analogues provides valuable information toward developing highly selective small molecule antagonists with low signaling capabilities for the treatment of IGF dependent cancers.

Rowan David

Principal Supervisor: Associate Professor Michael O'Callaghan

By thesis entitled:

Late Genitourinary Toxicity Following External Beam Radiotherapy for Prostate Cancer

Prostate cancer is common and is often treated with external beam radiation therapy (EBRT). However, there is a paucity of data on late genitourinary toxicity occurring over five years from EBRT, especially for contemporary techniques. Hence this research determines the incidence, impact on patients and institutions, and predictors associated with radiation-induced genitourinary toxicity. We found that radiotherapy-related genitourinary toxicity is common and often occurs beyond the follow-up periods included in most randomised control trials. A high burden of elective and emergency urology workload is attributed to patients with delayed genitourinary radiation toxicity in a tertiary community centre Urology department. Patients treated with EBRT are at significantly increased risk of recurrent overall and gastrointestinal toxicity-related hospital admission. Treatment-related toxicity has a sustained impact on patient quality of life. However, radiotherapy-related toxicity can be predicted, and clinicians can use our validated nomogram to avoid or minimise toxicity.

Jennifer Leanne Haycock

Principal Supervisor: Associate Professor Nicole Lovato

By thesis entitled:

The Management of Insomnia in Australia

Insomnia is the most common sleep disorder in Australia impacting the lives of millions of people every day. Most people with insomnia do not receive the recommended treatment of Cognitive Behavioural Therapy for insomnia (CBTi), and many are prescribed medications. This thesis investigates why this gap exists between clinical guidelines and clinical practice. This research explores the management of insomnia from the perspectives of people with insomnia, GPs and psychologists. Comparing the experiences of different parties involved gives a more complete picture of barriers to evidence-based care. Findings show people with insomnia feel helpless about improving their sleep, other health conditions take priority, health professionals are unaware of psychological treatments for insomnia and lack training in CBTi. This thesis makes recommendations to improve policy and practice regarding the management of insomnia, which will ultimately help to improve quality of life for the millions of people suffering from insomnia.

Kathleen Eliza Jurgens

Principal Supervisor: Professor David Currow

By thesis entitled:

A cross-sectional survey of bereaved caregivers' perspectives on preparedness, moving forward and impact of support from a palliative care bereavement service. With a scoping review of bereavement service descriptions

Provision of bereavement support is an expected function of specialist palliative care services. However, there is a critical gap in knowledge about the aims of palliative bereavement services and the impact of service-initiated contact. By exploring the impact of service-initiated contacts, this research makes an original contribution to the field. Analysis showed that the provision of bereavement information and pathways to support provides a 'safety net'. The impact of grief counselling in this setting was also assessed and reported as helpful. A further unique contribution was testing the concept of 'moving forward' in grief. It showed participants could clearly identify signs of concern. Additional evidence was obtained about supporting caregiver preparedness for an expected death and the influence of healthcare providers communication had. The critical role preparedness plays in self-reported bereavement adjustment was similarly demonstrated.

Jessica Amy Thomas

Principal Supervisor: Professor Tara Brabazon

By thesis entitled:

Translating Knowledge into Meaningful Action: Advancing Alcohol Related Breast Cancer Prevention

Drinking alcohol increases breast cancer risk. Alcohol represents one of the few modifiable risk factors and has been linked to 20% of Australian breast cancer cases. This research addresses a critical gap on how to effect change. The first phase found women predominantly drank for pleasure, or relief from oppression. Those drinking for relief from oppression are more likely to consume higher volumes, indicating that gender equality could reduce breast cancer risk. The second phase found that participatory research, where everyday women collaborate with scientific researchers, improved research outcomes. Completing the first participatory research on alcohol advertising found that marketing creates positive expectancies of alcohol, which may actively inhibit breast cancer messaging. The third phase, a national survey found that women without a university level education were consuming more alcohol. Future research which 'works with' women is more likely to be effective in reducing breast cancer risk.

Ravi Raj Vissapragada

Principal Supervisor: Dr Roger Yazbek

By thesis entitled:

Achieving Cost-Effective Endoscopic Surveillance and Treatment of Barrett's Oesophagus

Oesophageal cancer has one of the lowest five-year survival rates among cancers at ~20%. This improves to ~90% when detected at a stage amenable to endoscopic resection. For this reason, patients with its precursor condition known as Barrett's oesophagus are under endoscopic surveillance. The conversion from Barrett's oesophagus to oesophageal adenocarcinoma is rare. The aim of this thesis project was to build a health economic model that accurately simulates the natural progression of Barrett's oesophagus to adenocarcinoma and improve the cost-effectiveness of endoscopic surveillance of Barrett's oesophagus. The results indicate that excluding patients with short segment Barrett's oesophagus (<2cm) from endoscopic surveillance was cost-effective. This cost-effectiveness was improved when patients with long-segment Barrett's oesophagus were offered endoscopic ablation of low-grade dysplasia. These results are in keeping with the literature and provide necessary confirmation of the direction needed to be taken in the surveillance of Barrett's oesophagus.

College of Medicine and Public Health

THURSDAY 14 DECEMBER 2023 3:30pm

Lachlan Samuel Wheelhouse Knight

Principal Supervisor: Professor Jamie Craig

By thesis entitled:

A clinical perspective of childhood glaucoma: an exploration of genotypes, phenotypes, and quality of life

Childhood glaucoma, although rare, is a leading cause of irreversible childhood vision impairment and blindness worldwide. It requires complex and specialised lifelong management and has the potential to cause a considerable impact on quality-of-life. Despite this, clinical practice guidelines for the management of childhood glaucoma do not yet exist. Mr Knight's research detailed the clinical presentation of the many genes implicated in childhood glaucoma and the impact of the condition on the quality-of-life of children and adults with childhood glaucoma, and their caregivers. From this, he developed the world's first quality-of-life measure for adults with childhood glaucoma. Mr Knight's original research has led to a proposed framework for a family-centred multidisciplinary approach to the management of childhood glaucoma. This will serve to ensure that any individual impacted by childhood glaucoma is provided with the highest level of care and achieves the best possible clinical and quality of life outcomes.

Sara Zabeen

Principal Supervisor: Professor Sharon Nanai

By thesis entitled:

Investigating the acceptability and feasibility of a self-management care planning-based intervention: To improve cardiovascular health and quality of life of community-living adults with severe mental illness

While there is evidence of the effectiveness of person-centred and recovery-oriented health interventions in improving cardiovascular health of those with severe mental illness, their adoption and sustainability as part of routine care have been limited within the mental health system. This exploratory thesis aimed to investigate the underlying causes behind this systemic issue from a socio-cultural viewpoint by capturing and elevating 48 key stakeholders' voices. The results found that service users' health-seeking behaviours were negatively impacted by their past experiences related to treatment coercion from the mental health system, and staff members' preconceptions regarding service users' ability to recover. Patriarchy in the service culture, funding issues, and resource mismanagement were identified as root causes resulting in a paucity of recovery-oriented care. Key findings generated a novel middle-range model called Supported Self-Management and Social Recovery (SSMSR) and 40 Initial Programme Theories (IPTs) to define key stakeholders' sustained roles within SSMSR.

DEGREE OF DOCTOR OF PUBLIC HEALTH

Elissa Kate Mortimer

Principal Supervisor: Professor Geraint Rogers

By thesis entitled:

An investigation into the feasibility and effect of dietary resistant starch supplementation in HIV-positive adults in India

Globally, HIV continues to cause disease and loss of life, with 1.5 million people becoming infected in 2021 and 650,000 deaths attributed to AIDS-related illness. In low-middle-income-countries, HIV disease is worsened by a gut malabsorption syndrome caused by unsafe water and inadequate sanitation, compromising health and economic outcomes. The gut microbiota refers to bacteria which live throughout the gastrointestinal system. Both HIV and Anti-Retroviral Therapy for HIV disturb the gut microbiota. This interferes with gastrointestinal and immune function, further compromising health in HIV-positive people. Resistant starch is a dietary carbohydrate which is fermented in the large intestine, providing energy for bacteria that live there. This study investigated if dietary resistant starch supplementation in an HIV-positive population in India is feasible and leads to improvements in gut health and immunity. It represents an original contribution to knowledge by being the first study to examine a sole resistant starch supplement in this population.

College of Science and Engineering

THURSDAY 14 DECEMBER 2023 3:30pm

DIPLOMA OF DIGITAL TECHNOLOGIES

Julia Ruth Andriske
Renee Fagan
Justine Flaherty
Emma Lena Foster
David Robin Gaudry
Tuesday Amanda Godfrey
Aaron Heaney
Marianna Illiadis
Andrew Michael Johnston
Muhammed Shahriar Kabir
Casey Ryan Morgan
Mark Nolan
Justin Sajatovic
Daniel Morris Sayers
Michael Stephensen
Tamara Stewart
Kristie Ann Teerman
Sara Walker
Kimberley Watts

DEGREE OF BACHELOR OF ARTS AND SCIENCE

Caitlin Julia Hassett

DEGREE OF BACHELOR OF COMPUTER SCIENCE

Daniel Lewis Carter
Ethan Thomas Ezio Marino
William Craig Mibus
Richard Alexander Stone Reyes

DEGREE OF BACHELOR OF COMPUTER SCIENCE (ARTIFICIAL INTELLIGENCE)

Khalifa Mejed Mefareg Awadh Alameri

DEGREE OF BACHELOR OF DESIGN AND TECHNOLOGY INNOVATION

Eline Helena Van Mil

HONOURS DEGREE OF BACHELOR OF DESIGN AND TECHNOLOGY INNOVATION

Andrew David Kitching

HONOURS DEGREE OF BACHELOR OF ENGINEERING (BIOMEDICAL)

Paula Ostendorf (First Class)
Simeon Pitukolo
Atefa Rezwani
Samyam Shakya (First Class)
Varun Thyagarajan
Tyler James Veldhoen

DEGREES OF BACHELOR OF ENGINEERING (BIOMEDICAL) (HONOURS) AND MASTER OF ENGINEERING (BIOMEDICAL)

Darcy Michael Dunn -Lawless (First Class)

HONOURS DEGREE OF BACHELOR OF ENGINEERING (CIVIL)

Bo Fu (First Class)

Ashley Goodieson (First Class)
David Jason Hallows
Athul Kuriakose Jiji
James Joseph Lassaline
Michael Renzo Querido
Micah Veramu Jone Rasigatale (First Class)
Matthew Paul Reynolds (First Class)
Julian Sheean
Noah Lodge Zaric

HONOURS DEGREE OF BACHELOR OF ENGINEERING (COMPUTER AND NETWORK SYSTEMS)

Leo William Hock -Morris (First Class)

HONOURS DEGREE OF BACHELOR OF ENGINEERING (ELECTRICAL AND ELECTRONIC)

Samuel O'Neil
Luke Sebastian Waymark

HONOURS DEGREE OF BACHELOR OF ENGINEERING (ELECTRICAL)

Lewis Henry Kittel

HONOURS DEGREE OF BACHELOR OF ENGINEERING (MECHANICAL)

Voon Leong Chung
Mark Thomas Judd
Julian Sheean
Chi Ki Siu
Sebastian Vejo

HONOURS DEGREE OF BACHELOR OF ENGINEERING (ROBOTICS)

Myles Stuart Adams

HONOURS DEGREE OF BACHELOR OF ENGINEERING (SOFTWARE)

Luke Derby (First Class)
Tyler James Veldhoen

HONOURS DEGREE OF BACHELOR OF INFORMATION TECHNOLOGY

Yupeng Cai

DEGREE OF BACHELOR OF INFORMATION TECHNOLOGY

Sumit Maharjan
Benjamin James Martin
Railene Mitch Rodriguez
Saksham Sharma
Kartik Tola
Luke Sebastian Waymark
Adam White

DEGREE OF BACHELOR OF INFORMATION TECHNOLOGY (DIGITAL MEDIA)

Lachlan Maurice McIntosh
Cameron Ryan West

College of Science and Engineering

THURSDAY 14 DECEMBER 2023 3:30pm

DEGREE OF BACHELOR OF INFORMATION TECHNOLOGY (NETWORK AND CYBERSECURITY SYSTEMS)

Usman Ahmed
Simon John Charles Cullimore
Michael Dang
Luke Derby
Sarah Kate Hibberd
Daniel William Keatley
Vitolio Ateliano Alikihokipunamauli Laufou
Robert Tyler Malkic
Joshua William Pace
Jose Jehrome Rando

DEGREE OF BACHELOR OF INFORMATION TECHNOLOGY (SIMULATION AND SERIOUS GAMES)

Elijah Trajkovic
Benjamin James Ward

DEGREE OF BACHELOR OF LETTERS (MATHEMATICS)

Luke Sebastian Waymark

DEGREE OF BACHELOR OF MATHEMATICAL SCIENCES

Brayden Jake Connor Fulwood

DEGREE OF BACHELOR OF SCIENCE

Madeline Rose Box
Emilie Rose Hanckel
Kiarah Komar

HONOURS DEGREE OF BACHELOR OF SCIENCE

Amy Cahill
Liam Anthony Lepore (First Class)
Michelle Faye Newman (First Class)
Natalie Sarel Newman (First Class)
Arisha Fern Silverlake (First Class)
Ishana Lakshmi Somers (First Class)
Bethany Lyn Treglown (First Class)

DEGREE OF BACHELOR OF SCIENCE (ANIMAL BEHAVIOUR)

Xukun Huang
Gabriela Kalinowski
Jessica Sophie King
Shiu Yu Zoey Leung
Hoi Lam Ng
Incheol Shin

DEGREE OF BACHELOR OF SCIENCE (BIODIVERSITY AND CONSERVATION)

Gabriela Kalinowski
Maddison Courtney Randall

DEGREE OF BACHELOR OF SCIENCE (BIOTECHNOLOGY)

Vidia Dina Hurdowar
Madeline White

DEGREE OF BACHELOR OF SCIENCE (ENVIRONMENTAL SCIENCE)

Coen James George Martin
Eloise Kate Miles
Ryan Mc Donald Ian Perry

DEGREE OF BACHELOR OF SCIENCE (FORENSIC AND ANALYTICAL SCIENCE)

Mohamed Saeed Mohamed Khaleefa Alzaabi
Nicholas Biggar
Mason John Dylan Goodfellow
Isabella Moffa
Dana Ross
Mandeep Singh Saini
Amber Rose Tomney
Abbey Kate Trotta

HONOURS DEGREE OF BACHELOR OF SCIENCE (FORENSIC AND ANALYTICAL SCIENCE)

Renee Anderson

DEGREE OF BACHELOR OF SCIENCE (HYDROLOGY)

Ben Mullins
Zachary John Rossato

DEGREE OF BACHELOR OF SCIENCE (MARINE BIOLOGY AND AQUACULTURE)

Emily Gabriela Vonderwall

HONOURS DEGREE OF BACHELOR OF SCIENCE (MARINE BIOLOGY AND AQUACULTURE)

Sunira Melissa Reardon (First Class)

DEGREE OF BACHELOR OF SCIENCE (MOLECULAR BIOSCIENCES)

Brianna Elizabeth Scanlon

HONOURS DEGREE OF BACHELOR OF SCIENCE (MOLECULAR BIOSCIENCES)

Ellen Kate Wauchope

HONOURS DEGREE OF BACHELOR OF SCIENCE (PALAEONTOLOGY)

Maddison Courtney Randall (First Class)

GRADUATE DIPLOMA IN ENGINEERING MANAGEMENT

Justin Lee Renfrey

**GRADUATE DIPLOMA IN ENVIRONMENTAL
HEALTH PRACTICE**

Claire Hayward
Ross Moore
Alicia Marie Elizabeth Zachat

**GRADUATE DIPLOMA IN SCIENCE (GROUNDWATER
HYDROLOGY)**

Simony Yumi Yaginuma Sakamoto

DEGREE OF MASTER OF COMPUTER SCIENCE

Uttam Prasai
Sanduni Kavindya Bombuwala Suduwa Dewage
Kaushani Uthpala Kumari Ubeyasingha

DEGREE OF MASTER OF DATA SCIENCE

Abhishek Chhetri

DEGREE OF MASTER OF ENGINEERING

Rajina K C

**DEGREE OF MASTER OF ENGINEERING
(BIOMEDICAL)**

Nguyen Khanh Vy Bui
Aaron Mitchell Doherty
Abraham Jacob
Arsha Sivamani

DEGREE OF MASTER OF ENGINEERING (CIVIL)

Akshay Ahlawat
Wing Yin Ng

**DEGREE OF MASTER OF ENGINEERING
(ELECTRICAL AND ELECTRONIC)**

Shoko Koga
Anirudh Shyam Pednekar
Bilal Rashid

**DEGREE OF MASTER OF ENGINEERING
(MECHANICAL)**

Dhananjaya Kithsiri Imiya Kankanamalage
Harshkumar Girishbhai Patel
Nirajkumar Patel
Parthkumar Dasharathbhai Patel
Nguyen Binh Trinh

**DEGREE OF MASTER OF ENGINEERING
MANAGEMENT**

Ramu Radhakrishnan
Kimberley Caitlin Terrace
Clayton Paul Tucker
Jesu Durai Victor
Dylan Jay Wise

**DEGREE OF MASTER OF ENGINEERING SCIENCE
(MECHANICAL)**

Utsavkumar Ashokbhai Patel
Dineshkumar Arajanbhai Prajapati
Preetmohan Singh Sekhon

**DEGREE OF MASTER OF INFORMATION
TECHNOLOGY**

Sandesh Acharya
Hui Yu Chan
Pui Ki Chan
Dang Khoa Dang
Keyur Bavchandbhai Kakadiya
Chamantha Bandara Karunanayake Karunanayake Mudiyanseelage
Shaiduo Lei
Eril Levana
Jingdi Lin
Jianqin Liu
Regina Mathew
Dinushi Kaushalya Navaratna
Dulan Nethrarathna
Divya Jigneshkumar Patel
Raj Vasantkumar Patel
Pujan Paragbhai Shah
Heng Shi
Mian Shum
Ghazanfar Ali Soomro
Lei Tang
Jonathan Felipe Vergara Martinez
Chunli Wei
Ching Yu Wong
Yang Zhao

**DEGREE OF MASTER OF INFORMATION
TECHNOLOGY (NETWORK AND CYBERSECURITY
SYSTEMS)**

Sharmin Ahmed
Chinedum Anekwe
Agostino Araujo Pereira
Taqsim Ahamed Barbhuiya
Pijush Chowdhury
Baddeliyanage Dulan Chathuranga Fernando
Xiachen Jiang
Arnold David Madrid Lim
Jeel Sanjaykumar Patel
Milankumar Dahyabhai Patel
Shreyaben Rutulkumar Patel
Duc Duong Phi
Vaishali Sharma
Mufthi Ahamed Thanzeel

DEGREE OF MASTER OF NANOTECHNOLOGY

Federico Guillermo Muller

DEGREE OF MASTER OF SCIENCE

Nathan Trevor Garner
Petar Tomic

**DEGREE OF MASTER OF SCIENCE (COMPUTER
SCIENCE)**

Pranav Bhandari

**DEGREE OF MASTER OF SCIENCE (GROUNDWATER
HYDROLOGY)**

Jessica Ellen Thompson

DEGREE OF MASTER OF SCIENCE (MATHEMATICS)

Hani Hail M Alsharari

College of Science and Engineering

THURSDAY 14 DECEMBER 2023 3:30pm

DEGREE OF DOCTOR OF PHILOSOPHY

Temitayo Seyi Abiodun

Principal Supervisor: Professor Giselle Rampersad

By thesis entitled:

Digital Transformation for Production Performance

Globalization progressed the internationalization of production value chains. It increased the technological, socio-economic, and legal requirements of production ecosystems. It increased the variability in the economic environment of production and complicated the social license requirements. Industry 4.0, the digital transformation of industrial production, sought to address production performance challenges using technology to induce smartness along the value chain. This study addressed the question 'Why Industry 4.0', seeking insights into its value proposition and establishing the path from technology use to value creation. The study employed a mixed-method approach to develop a model for evaluating the Industry 4.0 value proposition and tested the model with production managers. The study found evidence of performance-enabling smart functionalities across production value chains induced by digital transformation. The study also developed insights into the value delivery potential of the different segments of production value chains, providing deeper contexts and guidance for industrial digital transformation strategies.

Abdulrahman Alotabi

Principal Supervisor: Professor Gunther Andersson

By thesis entitled:

Investigating the Physical, Chemical and Electronic Properties of Chromium Oxide Layers and Gold Clusters on Surfaces: Implications for Photocatalysis

The scientific community is researching alternative renewable and clean energy sources to shift away from fossil fuels and the associated CO₂ emission. The conversion of solar energy into useful chemical energy such as hydrogen via photocatalysis is a promising process to contribute to these alternatives, with much effort being focused on the development of photocatalysts for photocatalytic water splitting. Through this thesis physical, chemical, electronic and catalytic studies on the chromium oxide layer formed on photocatalysts and gold cluster modified photocatalysts were performed. The overall outcome of this thesis is an improved understanding of the nature of the photodeposited chromium oxide layer on photocatalysts and gold cluster modified photocatalysts treated at various conditions. Interestingly, it was demonstrated for the first time that formation of chromium oxide layer prevents agglomeration of gold clusters and improves the stability of chemically synthesised phosphine protected gold clusters deposited on photocatalysts.

Scott William Anderson

Principal Supervisor: Professor Trish Williams

By thesis entitled:

Enhancing IoT Cybersecurity Frameworks

Internet of Things (IoT) devices are the enablers of smart houses, intelligent streets, intellectual suburbs, and shrewd cities. They sit on your wrist, monitor your heart, turn your lights on and open your doors. Given the proliferation and unique challenges of IoT devices, the security of these devices is paramount. This thesis investigated the unclear language and cross-analysed the current industry published cybersecurity guidance across a range of target audiences. It employed a new methodology, based on multi-case, multi-topic case studies to enable the capture of the contextual shifts between the source materials. This research identified critical flaws and assumptions in the existing guidance for IoT cybersecurity, clarified the language of the IoT ecosystem, and identified a new 'gap-filling' approach to the creation of cybersecurity frameworks.

Francesca Bucci

Principal Supervisor: Professor Mark Taylor

By thesis entitled:

Inter-Subject Variability Of The Healthy Tibiofemoral Function

Knee ligament injuries and diseases, i.e., osteoarthritis, are a major global health burden. There is a lack of baseline information concerning tibiofemoral function and ligament mechanics across populations, thereby affecting surgical procedure outcomes in restoring the individual knee function. Thus, the overall thesis objective was assessing inter-subject variability of healthy tibiofemoral joint function, by (1) developing a novel ex-vivo experimental assessment to quantify the unloaded knee passive motion envelope, (2) quantifying variability and sex-based differences of the envelope in a cohort of thirty intact knee specimens representing healthy adults, and (3) developing a time-efficient musculoskeletal model providing tibiofemoral elastic response of individual tibiofemoral joint through compliance matrices. Thesis results included inter-subject and sex-specific variability of medial and lateral extremes of the unloaded knee passive motion envelope. Results displayed a moderately sex-specific passive motion, but significantly higher individual variability, suggesting that knee interventions should focus on personalised, rather than sex-specific solutions.

Jesse Peter Daughtry

Principal Supervisor: Professor Gunther Andersson

By thesis entitled:

Deposition, Topographic and Spectroscopic Studies of Metal Nanoclusters on Photocatalytic Surfaces

As Australia and the world undertake the transition to renewable energy, novel methods of harnessing solar energy have become critical. Photocatalysis, the catalysis of chemical reactions using energy from solar photons, offers pathways to the production of hydrogen, chemical storage of solar energy and industrial catalysis. Combining photocatalytic materials such as titanium dioxide with nanostructured co-catalysts, such as metal nanoclusters, improves photocatalytic performance and can be tailored to specific reactions. To further improve understanding of such systems, Mr Daughtry developed new methods to characterise the physical and electronic interactions between metal nanoclusters and photocatalytic surfaces. This included developing new methods to synthesise photocatalytic surfaces, attach metal nanoclusters to these surfaces under vacuum conditions, and observe and isolate the key surface interactions involved. This thesis isolates the impact of surface treatments and deposition conditions on nanocluster size and properties. These findings and techniques will help facilitate and improve photocatalytic system design.

Rebecca Jane Hermon

Principal Supervisor: Professor Trish Williams

By thesis entitled:

Information-flow Quality Determinacy

Analysis of medication errors reveal that information -flow failure may be caused by human error by omissions/ commission and has significant impact on patient safety. As such, there is a need to measure and understand information -flow to identify desirable and undesirable information -flow characteristics so that information -flow failure can be negated. The objective of this research was to develop a healthcare information -flow framework that could improve information -flow by measuring the maturity of the process. This required the development of information -flow characteristics to demonstrate the effectiveness of information -flow in healthcare. Using a Design Science Research Methodology, a healthcare information -flow maturity framework comprising a maturity matrix, scoring tool and improvement advice was developed, refined, and validated. This framework has the potential to be used during the reporting and post -incident investigation of information -flow failure to identify where improvement can be made, and ultimately improve patient safety.

Cassie Mae Hoepner

Principal Supervisor: Professor Karen Burke Da Silva

By thesis entitled:

Behind anemone lines: using omics to uncover the mechanisms involved in the iconic symbiosis between host sea anemones and anemonefish

Finding Nemo brought global attention to a quirky fish and its venomous home, yet our understanding of how symbiosis between the pair can occur continues to elude us. This thesis explores this symbiosis through the lens of the host sea anemone for the first time. The analysis of sea anemone venom demonstrates that only a small portion of their toxin -producing genes are actually present in the venom. Surprisingly, it was discovered that host sea anemones can adjust their venom production and expression of certain proteins when hosting anemonefish. Neurotoxin tentacle transcripts and proteins responsible for membrane damage and paralysis were downregulated, while natural venom inhibitors were upregulated in the presence of anemonefish. Overall, this thesis highlights the significant role of host sea anemones in establishing and maintaining their symbiotic relationship with anemonefish, shedding light on new areas for future research.

Bradley Peter Kirk

Principal Supervisor: Professor Mats Andersson

By thesis entitled:

Thermal stability of slot-die coated Organic Photovoltaics

Organic photovoltaics is an emerging solar panel technology that aims at providing clean, reliable, inexpensive energy. This is achieved by their ability to be fabricated as lightweight flexible solar cells; while having the ability to operate under lowlight conditions including cloud -cover and indoor conditions. The issue with these devices is when operating under outdoor conditions, these devices can experience elevated temperatures, which can lead to significant thermal degradation, resulting in a reduced lifespan. This research investigated major sources of degradation of organic photovoltaics that have been fabricated using techniques that are found in large scale manufacturing of printable solar panels. From the research conducted, it was found the significance of degrading organic photovoltaics at different temperatures as well as method for reducing these sources of degradation. Lastly, the study demonstrated the scalability of the research conducted, as well as further challenges that needed to be solved.

College of Science and Engineering

THURSDAY 14 DECEMBER 2023 3:30pm

Farzaneh Mohammadbeigi

Principal Supervisor: Professor Karen Small

By thesis entitled:

Design and implementation of a passive wireless sensor to monitor bone fracture healing

This study focused on the development of a smart implant using an intramedullary nail, aiming to quantitatively monitor bone fracture healing. By addressing a knowledge gap, it introduced an objective and quantitative approach for assessing the mechanical conditions and structural stability of healing bone defects. The implant incorporated sensors to provide real-time feedback and facilitate early intervention if any issues arise during the healing process. Notably, the proposed method employed a low-power capacitive strain sensor known for its high linearity, low hysteresis, and minimal energy consumption. Compared to common strain sensors, this sensor demonstrated an impressive eightfold reduction in energy consumption. Additionally, a passive RFID wireless system was designed to integrate the capacitive sensor, achieving remarkable performance in data and energy transfer for the implanted sensor. This innovative solution holds great promise for accurately quantifying the mechanical environment during bone fracture healing for future deployment in intramedullary nail implantation.

Anahita Motamedisade

Principal Supervisor: Professor Gunther Andersson

By thesis entitled:

Preparation of The Modified Mesoporous TiO₂ as Efficient Substrates for Loading the Prepared Au₉ Clusters; Study of Photocatalytic Degradation of Methyl Orange Dye Using Response Surface Methodology

This thesis delves into the world of nanotechnology and environmental sustainability, specifically focusing on the remarkable properties of Au nanoclusters and their ability to enhance the efficiency of titanium dioxide in photocatalysis. The heart of this research lies in surface modifications. It involves crafting porous semiconductors to boost surface area and imbuing the surface with N and S functional groups to stabilize Au nanoclusters (NCs) and elevate their presence on the TiO₂ surface. Through a series of rigorous experiments and careful experimental and data analysis, we uncover the vast potential of these surface modifications, shedding light on how they influence cluster size and photocatalysis. Our study features phosphine ligated Au₉ NCs as co-catalysts and mesoporous titanium dioxide (MTiO₂) nanoparticles as photocatalytic centres. These nanocomposites are then put to the test in breaking down methyl orange azo dyes, common environmental pollutants, with a focus on the key factors affecting their degradation by RSM.

Joel Aaron Panther

Principal Supervisor: Professor Trish Williams

By thesis entitled:

Labrandor – A framework for guiding the development of dynamically generated penetration testing laboratories

There is a global skills shortage in the cybersecurity sector. It is estimated that in 2022, there were over 3.4 million unfilled cybersecurity positions globally. The skills shortage poses significant economic and national security risks. Education and skills development are crucial to training people to fill these roles. The outcome of this research provides an educational solution, specifically focused on offensive security technical skills development, to sit alongside existing cybersecurity training resources. The solution is named Labrandor, a framework for guiding the development of dynamically generated penetration testing laboratories.

DEGREE OF DOCTOR OF SCIENCE

Manickam Minakshi Sundaram

The Higher Doctorate is the highest qualification awarded by the University. The Higher Doctorate is awarded to candidates who have had a distinguished career in which they have applied expert, specialised research skills and authoritative judgement in their discipline area. The Higher Doctorate is awarded to candidates who have produced an internationally recognised body of work, and have made significant and sustained original contributions to a field of research or to inter-disciplinary scholarship, at a level substantially higher than the requirements of a Doctor of Philosophy. This Prestigious award involves an examination of how the candidate's research has caused, or become a major part of, a significant debate among scholars in the relevant field or has caused significant changes in the direction of research or in the practice of recognised scholars in the relevant field.

College of Business, Government and Law

DEGREE OF BACHELOR OF CRIMINOLOGY

Isabella Moffa
Dana Ross

College of Humanities, Arts and Social Sciences

DEGREE OF BACHELOR OF CREATIVE ARTS (ENTERPRISE)

Eline Helena Van Mil

College of Medicine and Public Health

DEGREE OF BACHELOR OF MEDIAL SCIENCE

Atefa Rezwani

College of Education, Psychology and Social Work

FRIDAY 15 DECEMBER 2023 10:00am

HONOURS DEGREE OF BACHELOR OF BEHAVIOURAL SCIENCE

Liam Veltman

DEGREE OF BACHELOR OF BEHAVIOURAL SCIENCE (PSYCHOLOGY)

Ahmed Majid Husain Ahmed Alkatheeri
Gayna Denise Checkley
Kynan Viggo Saurbrey
Carla Summer

DEGREE OF BACHELOR OF COMMUNITY SERVICES

Susan Zealand

DEGREES OF BACHELOR OF EDUCATION (EARLY CHILDHOOD & SPECIAL EDUCATION), BACHELOR OF DISABILITY STUDIES

Casey Paige Camilleri
Emily Jayne Pyke
Grace Elizabeth Ramsey Martin
Amelia Bond Young

DEGREES OF BACHELOR OF EDUCATION (EARLY CHILDHOOD) AND BACHELOR OF ARTS

Alexandra Claire Bentley
Jack William Dollard

DEGREES OF BACHELOR OF EDUCATION (PRIMARY R-7 & SPECIAL EDUCATION), BACHELOR OF DISABILITY STUDIES

Catherine Helen Brzezinski
Michael Benjamin Daly
Carlie-Marie De Donatis
Anne Fisher
Benjamin Robert Green
Catherine Elizabeth Iengo
Syam Prisco
Charlotte Lily Vince

DEGREES OF BACHELOR OF EDUCATION (PRIMARY R-7) AND BACHELOR OF ARTS

Madison Breese-Fiegert
Tynan John Cassidy
Julia Colton
Tobin Christopher Dolman
Imogen Tarnie Dwyer
Emily Grant
Monique Ebony Hausser
Nicole Louise Hooper
Kimberly Sarah Hudson
Tobie Mariana Hunt
Liana Emily Lovison
Alexis Lauren Malone
Cindy Malone
Kelsey Jasmine Mitchell
Bailey Rawlinson
Chloe Annalise Robinson
Tejas Christopher Scargill
Morgan Grace Taylor
Brydie Joy Waters

DEGREES OF BACHELOR OF EDUCATION (PRIMARY R-7) AND BACHELOR OF GENERAL SCIENCE

Marcus Llewellyn Williamson

DEGREES OF BACHELOR OF EDUCATION (PRIMARY R-7) AND BACHELOR OF SPECIAL EDUCATION

Abbey Plannegger

DEGREES OF BACHELOR OF EDUCATION (SECONDARY) AND BACHELOR OF ARTS

Emma Jacquelyn Chislett
Tyson Emery
Alan Bryan Frank Jennings
Maddison J Olsen
Brie Elizabeth Taylor

DEGREES OF BACHELOR OF EDUCATION (SECONDARY) AND BACHELOR OF HEALTH SCIENCES

Christin Foundas
Joseph Andrew Gluyas
Matthew Keynan Greenfield
Niamh Morgan
Mitchell Ryan Walton

DEGREES OF BACHELOR OF EDUCATION (SECONDARY) AND BACHELOR OF SCIENCE

Peter Kirby Nangle
Megan Clare O'Connor

DEGREES OF BACHELOR OF EDUCATION (SECONDARY) AND BACHELOR OF SPECIAL EDUCATION

April Lee Harris
Emma-Leah Page

DEGREE OF BACHELOR OF EDUCATION (SPECIAL EDUCATION)

Salawati Bte Abdul Rahman

DEGREE OF BACHELOR OF EDUCATION STUDIES

Claire Adelaide Bowen
Cristine Lam
Lauren Jean Thompson

DEGREES OF BACHELOR OF EDUCATION STUDIES AND BACHELOR OF ARTS

Madeline Louise Stringer

DEGREES OF BACHELOR OF EDUCATION STUDIES AND BACHELOR OF DISABILITY STUDIES

Akira Louise violet Musson

DEGREE OF BACHELOR OF PSYCHOLOGICAL SCIENCE

Karyn Ruth Blacker
Jazz Castle
Nikola Hanna Copland
Amy Edgar-Barcelo
Shelby Rose Gourlay
Ella Rose Guilda
Dinuri Gunaratne
Taylah Claire Hogben
Isabella Annwyn Jose
Tharumila Thasmini Kulatunga
Monique Macri
Henry Joseph Mathews
Kiera Mcclean-Flayol
Rambukkana Maggonage Chenuri Chanpani Perera
Nathaniel Evans Polkinghorne
Charlotte Elise Rivers
April Celene Rouse
Lavanya Sarathchandra
Blake Warneke

HONOURS DEGREE OF BACHELOR OF PSYCHOLOGICAL SCIENCE

Elizabeta Brkic (First Class)

DEGREE OF BACHELOR OF PSYCHOLOGICAL STUDIES

Robhelia Ordas Castro
Jordarna Florence Clayton
N'Tonya Lea Surynt

HONOURS DEGREE OF BACHELOR OF PSYCHOLOGY

Madeline Jane Evans
Maslin Raine Hughes
Jackson Thomas Mason Stephens (First Class)
Isabelle Jayne Slattery

DEGREE OF BACHELOR OF SOCIAL WORK

Brandon Anderson
Navan Atwal
Nadine Amanda Burford
Chi Ping Chan
Emily Jane Cobb
Sarah Fassos
Lucy Charlotte Fordham
Sarah Louise Galloway
Rebecca Hempel
Sophie Kerridge
Pui Ting Lo
Sharon Margaret Mary McCreight
Kiera Shana Murphy
Lucinda Mary Ralph
Ashlee Kristen Rayner
Renae Diana Reed
Jana Kathryn Souvertjis
Emily Chanelle Thornhill
Angela Maria Vlachos
Xueqing Wang

DEGREE OF BACHELOR OF SPORT, HEALTH AND PHYSICAL ACTIVITY

Hussein Al-Rabiea
Lewis Samuel Carey
Naomi Guley
Tahlea Faith Loechel
Abby Josephine Petherick

GRADUATE CERTIFICATE IN EDUCATION

Emma Jacquelyn Chislett
Brydie Joy Waters

GRADUATE CERTIFICATE IN EDUCATION (SPECIAL EDUCATION)

Angie Kleyn

GRADUATE CERTIFICATE IN LOSS, GRIEF AND TRAUMA COUNSELLING

Mary Frances Mcphee

GRADUATE CERTIFICATE IN SOCIETY AND THE INDIVIDUAL

Jaspreet Kaur
Aurleen Kaur
Rajat Dabra
Ayo Jackson
Jaspreet Kaur
Eryn Rose Kneebone Kralj
Solomon Kipng'Etich Sawe

GRADUATE CERTIFICATE IN WELLBEING AND POSITIVE MENTAL HEALTH IN EDUCATION

Emily Megan Barr

GRADUATE DIPLOMA IN PSYCHOLOGY (ADVANCED)

Vineet Dhingra

GRADUATE DIPLOMA IN SOCIAL CARE

Xiaoyan Pan

DEGREE OF MASTER OF COGNITIVE PSYCHOLOGY AND EDUCATIONAL PRACTICE

Ka Kar
Zara Lee

College of Education, Psychology and Social Work

FRIDAY 15 DECEMBER 2023 10:00am

DEGREE OF MASTER OF EDUCATION

Kathryn Lynn Button
Sheng Chen
Serena Jay Corral-Ruiz
Pu Han
Qiaonu Hu
Baomei Huang
Mengchu Li
Shanshan Pu
Shengying Qian
Nicola Silsby
Gaojie Song
Yanxia Su
Ying Su
Yan Sun
Yitong Xin
Juanjuan Xue
Chenfang Yan
Xia Yu

DEGREE OF MASTER OF EDUCATION (COGNITIVE PSYCHOLOGY AND EDUCATIONAL PRACTICE)

Boel Ann Muyderman

DEGREE OF MASTER OF EDUCATION (LANGUAGES EDUCATION)

Jacqueline Anne Pethybridge

DEGREE OF MASTER OF EDUCATION (LEADERSHIP AND MANAGEMENT)

Simon Andrew Baccanello
Samuel Haymet Foreman
Christopher Matthew Gann
Aye Aye Mon

DEGREE OF MASTER OF EDUCATION (SPECIAL EDUCATION)

Lauren Johnson
Carmelle July Lasaca

DEGREE OF MASTER OF EDUCATION (WELLBEING AND POSITIVE MENTAL HEALTH)

Belinda Kate Padgett
Justin Michael Pool
Lucinda Rose Wilson

DEGREE OF MASTER OF LEADERSHIP IN EDUCATION

Bethany Richardson

DEGREE OF MASTER OF SOCIAL WORK

Ademola Adeeso
Adrian Lee Alexander
Aysa Ali
Divya Bajaj
Thomas Anthony Binnie
Ho Doan Trang Bui
Matthew Patrick Callahan
Jeannelle Renee Wong Callueng
Ana Carolina Ceballos Escobar
Yu Chen
Kirsten Close
Leticia Costa Lopes
Fiona Louise Crew
Yasmine Ruth Ernst
Rebecca Farley
Nicole Kaye Feetham
Elwen Jelena Firns
Katrina Freene
Caitlin Amanda Gaffney
Kerri Leanne Gavros
Joao Victor Goncalves Feitosa
Rachael Grimshaw
Jiaming Guo
Denish Gurung
Jiayi He
Wan-Ting Huang
Tak Chuen Hui
Tochukwu Ijomah
Karena Marie Caird Clarke Jowsey
Alex Nicholas Kasprzak
Gur Kaur
Kavita
Yili Ke
Sinead Kemp
Madeline Ashlee Kert
Rabia Kundra
Chit Yu Kwok
Wing Tung Lam
Ching Yan Lee
Wan Ki Lee
Lok Sze Li
Yanan Li
Sandhya Luitel
Ariella Lunardi de Oliveira
Dana Mikala McDonald
Leena Elisabeth Miller
Maya Nair
Tran Phuong Duy Linh Nguyen
Juliana Nieto Mosquera
Nchekwube Nwakor
Amelia Irene Marie O'Donovan-Schulz
Omoyeme Henrietta Okiwelu
Ngoc Thach Pham
Gabriel Enrique Pitta Bayona
Annelise Rech Perozzo
Debasmita Roy
Pangna Vichet Sam Ath
Leah Michelle Schultz
Tanya Sharma
Man Chun So
Churu Song
Zizhu Song
Tamanna

Sze Lok Wai
Nok Yin Wan
Lujia Wang
Mingjia Wang
Tammy Rosslyn White
Ping Cheung Wong
Yuen Ching Wong
Xiaolin Wu
Di Yang
Ning Yang
Ming Yuan
Veronica Juru Zedikia
Xinyi Zhang

DEGREE OF MASTER OF TEACHING (EARLY CHILDHOOD)

Preetpal Ahuja Sehwat
Haosu Chen
Hor Yee Cheng
Man Hin Cheng
Shahriar Zaman Chowdhury
Ulfat Farah
Vineesha Reddy Gade
Rachna Gupta
Mengxin Han
Guoqing Huang
Shu-Ching Hung
Chi Hong Ian
Di Jin
Yuen Tung Kwan
Kwong Ming Darric Lee
Pak Yan Lee
Hoi Ying Ma
Ha Giang Nguyen
Ngoc Kha Tu Nguyen
Ngoc Hoang Chau Nguyen
Ngoc Thuy Vy Nguyen
Thi Tam Nguyen
Yingying Pan
Malky Dilukshi Anurada Perera Warnakula Patabendige
Nguyen Thao Nguyen Pham
Ishani Yasanthika Alwis Polwaththage
Zeng Qi
Deepa Ramakrishnan
Tesalonika Rudangta
Pui Tung Sham
Allensumanage Aneesha Sonali Silva
Allensumanage Maleesha Romali Silva
Alysia Marion Smith
Vasifa Tabassum
Xiaolan Wan
Cheuk Ki Yuen
Tianyang Zhang
Wenwen Zhang

DEGREE OF MASTER OF TEACHING (PRIMARY R-7)

Leah Sarah Craig

DEGREE OF MASTER OF TEACHING (PRIMARY)

Osadi Kavindika Wijesekara Jayawardena

DEGREE OF MASTER OF TEACHING (SECONDARY)

Joshua Barrington Roach
Bethany Kaye Schulz
Petra Youssef

DEGREE OF DOCTOR OF EDUCATION (COURSEWORK)

Lesley Claire Henderson
John Edward Santini
Mariusz Artur Sterna

College of Education, Psychology and Social Work

FRIDAY 15 DECEMBER 2023 10:00am

DEGREE OF DOCTOR OF EDUCATION

Fahad Ibrahim T Aldawsari

Principal Supervisor: Associate Professor Shane Pill

By thesis entitled:

Understanding Policy Enactment of Technology in Saudi Arabia: Three Case Studies in Intermediate Schools Pursuing the Future Gate Project

The study examined the enactment of policy processes regarding technology in schools in Saudi Arabia, focusing on the Future Gate Project to understand the nature of policy enactment in schools in a country where centralised decision-making is the norm. The research employed qualitative methods via an exploratory case study approach informed by Stephen Ball's policy enactment theory (Ball et al., 2012). The findings of the study proved that policy enactment in schools is a sophisticated series of contextually mediated, institutionally produced interpretation and translation processes. The study presented significant policy implications in school technology policy enactment, concluding that policymakers in the Ministry of Education should consider a policy development approach that incorporates different stakeholders from the initial stages. Finally, the study suggests that future researchers should consider adopting quantitative methods to establish causal relationships between different types of leadership and their impact on the school technology enactment process.

Vanessa Alexander

Principal Supervisor: Associate Professor Kerry Bissaker

By thesis entitled:

Are we on the same track? An exploration of educators', autistic students' and adults' conceptual understandings of Autism

Billions of dollars are spent globally on autism research, service provision, education, media campaigns and merchandise. This research explored whether the commodification of autism and/or other factors were of influence on educators' and autistic students' and adults' conceptions of autism. The research also aimed to determine whether conceptions of autism varied between research participants and how they reflected the interaction of the five processes of du Gay et al's (1997) Circuit of Culture, including representation, production, consumption, identity, and regulation. Fourteen research participants (six teachers, four autistic students and four autistic adults) were invited to share their conceptions of autism using photo elicitation methods and semi-structured interviews.

Susan Robyn Kupke

Principal Supervisor: Associate Professor Kerry Bissaker

By thesis entitled:

Cultural perspectives of a Lutheran primary school

This qualitative research explores students', staff and parents' perspectives of the culture of a Lutheran primary school in South Australia. For the first time, it contributes to a gap in Lutheran school cultural research by including student voices. Photographic elicitation interviews enabled participants to take photos of aspects of the school they perceived as being special and then elaborate on why the images were special. Data from the photos and text were analysed using values coding to illuminate six, main practices as findings. While the research provides current knowledge for Lutheran education, it brings together the work on practice architectures from Wilkinson and Kemmis (2015) with Schatzki's (2005) work on site ontology to contribute a new understanding of culture. Findings from the research illuminated the influence of socialisation on the school's culture and highlighted the perspectives of students as noticeably different from those of adults.

DEGREE OF DOCTOR OF PHILOSOPHY

Asma Akther

Principal Supervisor: Associate Professor Helen McLaren

By thesis entitled:

The adaptation of Australian-born children of skilled immigrants

Immigration is a defining characteristic of the 21st century. The successful adaptation of children of immigrants is crucial for their well-being and economic prosperity and social cohesion of their host country. Most research in the USA and Europe indicated poorer adaptation among children of immigrants. However, majority research has predominantly based on pooled samples of first and second-generation children of unskilled immigrants. This thesis aims to fill this gap by exploring the adaptation on emotional and behavioural problems, and academic achievement in reading and numeracy among second-generation children of skilled immigrants from non-English-speaking countries in Australia. The longitudinal study found second-generation children of skilled immigrants are thriving, demonstrating similar or better adaptation than children of skilled immigrants from English-speaking countries and native-born skilled parents, that is marked contrast with other countries. These findings have significant implications for researcher, policymakers, and practitioners, highlighting the positive adaptation of children of skilled immigrants.

Lucy Helen Bird

Principal Supervisor: Professor Emma Thomas

By thesis entitled:

Understanding the effect of political despair on personal well-being and actions to promote social change

Amid recent tumultuous socio-political events, widespread reports of people feeling despair about the political status-quo emerged. This despair was conceptualised as political despair, and was found to stem from people perceiving issues that they care about, like climate justice and racial equality, as unchangeable systemic injustices. Despite feeling despair, people were continuing to engage in actions to promote social change. However, political despair was detrimental for individuals' well-being, leading to burnout and stress. Given that burnout can drive disengagement from social movements, interventions for mitigating burnout, particularly in the climate context, were tested. Considering specific, pragmatic steps necessary for achieving climate justice was found to effectively reduce people's disengagement from the climate movement. Therefore, this thesis highlights the importance of understanding and mitigating political despair, to ensure people feel well enough to continue engaging in social change movements, so we can help bring about a more equitable and just society.

Desiree Juliette Gilbert

Principal Supervisor: Dr Leigh Burrows

By thesis entitled:

Re-imagining Professional Learning: How an Organic Exploration of Creativity and its Connection to Learning Illuminates New Possibilities

There are many diverse perspectives about creativity as a phenomenon, and in connection to learning. In direct relation to teacher professional learning, observation prior to this research revealed how critical reasoning processes are frequently given precedence over opportunities to imagine and to be creative. This disorienting observation instilled deep motivation to engage in this research. A creative and organic inquiry approach was used to explore how a better understanding of creativity might reveal new possibilities for engaging teachers in transformative learning experiences. Findings revealed the imaginal as a generative source of creativity, and creativity itself as the life-giving catalyst for deep learning and transformation. Also revealed was the interrelationship between creativity and critical reasoning processes as co-existing, complementary forces for deep learning. This highlighted the importance of both creativity and critical reasoning for and as learning. These findings illuminated new insights for re-imagining teacher professional learning.

Matthew Philip Iasiello

Principal Supervisor: Professor Eimear Muir-Cochrane

By thesis entitled:

Investigating the dual-continua model of mental health; assessment of mental wellbeing in the context of psychological distress

Matthew's research investigated the dual-continua model of mental health, which suggests that mental illness and mental wellbeing reflect distinct continua, rather than the extreme ends of a single spectrum. This model has significant implications in the way we promote mental health, and prevent, treat, and recover from mental illness. In his thesis, Matthew conducted the first systematic review of the relationship between mental illness and mental health, showed empirical evidence for the role of mental wellbeing in the recovery from mental illness, and identified theoretical and empirical issues in the assessment of mental wellbeing in the context of psychological distress. His work identified an untested and overlooked assumption in the literature, that non-distressed and highly distressed respondents interpret and understand wellbeing questions the same way. Matthew used novel methods to test this assumption, first demonstrating and then validating the issue across two studies with international collaborators.

Joanne Shearer

Principal Supervisor: Associate Professor Kerry Bissaker

By thesis entitled:

An explanatory mixed methods study of South Australian preservice teachers' self efficacy and preparation for disability inclusive education

This research examined the self efficacy and readiness of preservice teachers concerning disability inclusive education. In Australia, inclusive education for students with disability is legally mandated and supported by education standards. This research involved final year preservice teachers from two South Australian universities. Data collection comprised surveys and follow up interviews, while university course materials were analysed for disability related content. The findings indicate that the participating preservice teachers generally had high levels of self efficacy regarding disability inclusion but identified areas for improvement in their teacher education programs. They suggested an earlier introduction of disability related content. Additionally, they highlighted the need for training in collaborating with parents, carers, and specialists. Placement experiences influenced their perspectives significantly and inclusive mentoring from experienced teachers was emphasised as important. This research sheds light on strengths and areas of development in preparing preservice teachers for disability inclusive education.

College of Education, Psychology and Social Work

FRIDAY 15 DECEMBER 2023 10:00am

Kate Toone

Principal Supervisor: Dr Priscilla Dunk-West

By thesis entitled:

Lesbian and queer sex workers; understanding the effect of capital on identity and community

Sex workers and lesbians have long been compared to, or grouped together with, deviants in the literature on female sexuality. To date, little attention has been paid to the women who are situated in both of these identities – lesbian women working in the sex industry – despite an overrepresentation of lesbian women engaging in sex work. Using Bourdieu's concepts of habitus, field and capital, Ms Toone argues that lesbian and queer sex workers develop a highly reflexive understanding of sexuality which enables them to successfully 'play the game' in providing sexual services to a male audience despite not engaging with men in their personal sex lives. Toone argues that their work has significant impacts on their relationships with the queer community, their families and their sex working peers. This thesis gives lesbian and queer sex workers a platform to speak from their unique position and be better understood.

Joseph Edwin Maria van Agteren

Principal Supervisor: Professor Mike Kyrios

By thesis entitled:

Helping those who languish: innovating psychological mental health promotion solutions for people with poor mental Wellbeing

Despite being a promising lever for mental health reform, mental health promotion efforts to date have lacked significant impact. Through 8 studies, this PhD by prior published works explores how a reconceptualisation of the relationship between states of mental wellbeing and states of mental illness may lead to new avenues for improving the impact of early intervention solutions. The thesis firstly demonstrates how dedicated wellbeing measurement tools can feasibly be used to identify people who languish with low mental wellbeing, highlighting a significant hidden cohort of people that are struggling with poor mental health. Secondly, the studies provide evidence to suggest that psychological interventions that are designed in line with the proposed reconceptualisation, can both be effective in helping people improve their wellbeing and levels of distress, while demonstrating that this can feasibly be done using methodologies that do not necessarily place additional burden on the existing mental health system.

DEGREE OF DOCTOR OF PHILOSOPHY (CLINICAL PSYCHOLOGY)

Marcela De Lara Campos Radunz

Principal Supervisor: Professor Tracey Wade

By thesis entitled:

A Multifaceted Approach to Early Intervention in the Eating Disorders

Only one in four individuals with an eating disorder seek treatment, making the need for early intervention crucial. However, this is a relatively new field of enquiry, and much is not known about the best way to provide services. This thesis addressed three key issues. First, it examined the association between duration of illness and treatment outcomes, finding that longer duration does not lead to poorer outcomes. Second, it focused on identifying barriers to treatment-seeking to promote earlier help-seeking. Denial of illness and the inability of others to provide help emerged as significant barriers to treatment-seeking. Lastly, an early intervention model in primary health care aiming to remove barriers to treatment seeking by promoting early and rapid access to treatment was evaluated. Findings revealed the most effective approach to remove barriers to treatment-seeking and promote early help-seeking is the provision of early intervention services in primary health care.

Claire Margaret Dunbar

Principal Supervisor: Emeritus Professor Leon Lack

By thesis entitled:

Establishing the Sleep Disruption Characteristics of Wind Turbine compared to Traffic Noise Using Quantitative Electroencephalography with Spectral Power Analysis

With the pressing need to reduce carbon emissions, wind farms are rapidly being expanded. However, there have been complaints that wind farm noise (WFN) disturbs sleep. This thesis aimed to assess objective sleep disturbance using quantitative electroencephalography (qEEG) measurements in carefully controlled laboratory studies. Consistent with previous research, this work demonstrates that intermittent noise events, including WFN and road traffic noise above 30 dBA, produce transient changes in the EEG, primarily at noise onset. However, this sensitive qEEG analysis of sleep found no effect of continuous WFN at realistic noise levels present throughout the night. This study is among the first to use quantitative EEG power spectral analysis to go beyond traditional measures of sleep to comprehensively test for subtle changes in brain activity during sleep with noise exposure.

Ella Marie Keegan

Principal Supervisor: Professor Tracey Wade

By thesis entitled:

Shortening and Managing the Impact of Lengthy Treatment Waitlists for People with Non-underweight Eating Disorders

Eating disorders are serious and complicated mental disorders that are characterised by persistent disturbances in thoughts and behaviours relating to food, eating, and body weight or shape. Despite this, people with eating disorders are often placed on unacceptably long waitlists for treatment, increasing dropout. The COVID-19 pandemic has exacerbated this issue with numerous studies showing an increase in the prevalence of eating disorders, demand on eating disorder services, and waiting times for treatment. Thus, this thesis aimed to identify strategies to respond to lengthy treatment waitlists in a pandemic world. Taken together, results support the use of shorter treatment as a strategy to shorten waitlists by enabling more people to be seen more quickly. Results also suggest that providing brief intervention while people are waitlisted for treatment is a viable strategy to manage the impact of lengthy waitlists on dropout, by improving retention in treatment when it becomes available.

Lara Rose King

Principal Supervisor: Professor Michael Wenzel

By thesis entitled:

A dual conceptualisation of personal authenticity and its relationship with offender defensiveness and moral repair

Although it is widely acknowledged that authenticity is highly valued, there is less consensus about what authenticity is. The present thesis proposes and finds evidence for two dimensions of authenticity (as it applies to people); present-state authenticity (feeling true to one's present-state experiences, i.e., thoughts and emotions) and self-concept authenticity (feeling true to conceptual notions of who one is). Across five studies, this conceptual distinction is explored within the context of real-life interpersonal wrongdoings. Challenging notions of authenticity as a wholly positive construct, this work finds that feeling self-concept authentic following wrongdoing may be an outcome of defensiveness and a barrier to constructive processing, and feeling present-state authentic may reflect feelings of self-justification that share associations with defensiveness. However, authenticity motives or goals may have positive implications for how one deals with the transgression and behaves in the future.

Elizabeth Jane Osborn

Principal Supervisor: Professor Robyn Young

By thesis entitled:

Estimating the Probability of Homelessness for Individuals on the Autism Spectrum: Known Risk Factors or Specific Characteristics?

Homeless experiences are not discriminatory, there are additional risk factors and lack of protective factors that can make neurodiverse populations more vulnerable. However, the relationship between autism and homelessness has been given little consideration. This thesis investigated the specific factors that may contribute or protect autistic individuals from homelessness. A systematic review was conducted to develop an in-depth understanding of prior research. To identify relevant autistic characteristics related to homelessness, qualitative data was obtained from five focus groups (33 participants) including autistic and homeless individuals. Quantitative data was collected from 333 individuals, using an online questionnaire. Doctor Osborn compared homeless risk factors and autistic characteristics across diagnostic groups, the sum of autistic characteristics contributed to homeless risk independently. The relationship was influenced by socioeconomic status, diagnosis, adaptive functioning, social and family support. A number of clinical and policy implications highlighted the importance of diagnostic screening, advocacy, and specialised support.

Larissa Nicole Roberts

Principal Supervisor: Professor Reg Nixon

By thesis entitled:

An Evaluation of Stepped Care for the Treatment of Posttraumatic Stress Disorder

Stepped care approaches can increase the accessibility of treatment by matching clients to an intervention level that suits their current needs. However, limited literature has evaluated stepped care for PTSD. The thesis advances this literature, first by conducting a systematic review of stepped care approaches for PTSD, and then based on these findings, by developing and evaluating an online stepped care treatment approach for PTSD via a pilot study and randomised controlled trial. The stepped care approach was found to be effective at improving PTSD, depression, and quality of life. It was also more cost-effective than a gold-standard PTSD therapy, Cognitive Processing Therapy, and acceptable as rated by participants. These findings indicated that the stepped care approach was feasible, even among participants with high symptom severity and complexities. With further tailoring, stepped care has the potential to increase the accessibility of evidence-based treatments for PTSD while maximising treatment outcomes.

College of Education, Psychology and Social Work

FRIDAY 15 DECEMBER 2023 10:00am

Cherie Su Qing Sim

Principal Supervisor: Professor Eva Kemps

By thesis entitled:

Nudging healthier choices through menu labelling

In recent times access to unhealthy food prepared outside the home has continued to grow. The resulting increase in intake of excessive amounts of salt, fat and sugar is associated with various diseases and health complications. As such, the research goal of this thesis was to encourage healthier eating specifically in out of home dining. Labelling was chosen as a nudge intervention to help inform consumers without limiting their choices. The thesis consists of three empirical studies, and a meta-analysis, all with the goal of examining menu labelling in an out of home dining context. The results show support for the use of labels that help consumers interpret information, such as traffic light colours. Outcomes of the thesis contribute to the growing field of menu labelling which will help future policy development to encourage healthier food choices among the wider population.

College of Business, Government and Law

DEGREE OF BACHELOR OF BUSINESS (HUMAN RESOURCE MANAGEMENT)

Amy Edgar-Barcelo

Henry Joseph Mathews

DEGREE OF BACHELOR OF CRIMINOLOGY

Nikola Hanna Copland

Ella Rose Guilda

Isabella Annwyn Jose

College of Medicine and Public Health

GRADUATE CERTIFICATE IN COUNSELLING (BEHAVIOURAL HEALTH)

Tharumila Thasmini Kulatunga

College of Business, Government and Law

FRIDAY 15 DECEMBER 2023 3:30pm

DEGREE OF BACHELOR OF ACCOUNTING

Waldah Mbabazi
Luis Pepaj
Walter Thomas Redpath
Usman Shahid
Ying Wong

DEGREE OF BACHELOR OF ACCOUNTING AND FINANCE

Cassey Anne Hewett
Dylan-Reigh Krenczeck
Charlotte Shae Walters

DEGREE OF BACHELOR OF BANKING AND FINANCE

Jack James Chalmers
Stephen Ottanelli

DEGREE OF BACHELOR OF BUSINESS

Jenna Jade Austin
Daniel Sean Clark

DEGREE OF BACHELOR OF BUSINESS (ADVANCED LEADERSHIP AND HUMAN RESOURCE MANAGEMENT)

Angelika Marta Kapys
Michael Patrick Magaletta

DEGREE OF BACHELOR OF BUSINESS (ADVANCED LEADERSHIP AND MANAGEMENT)

Claudia Bradley

DEGREE OF BACHELOR OF BUSINESS (BUSINESS ECONOMICS)

Kaedan O'Neill

DEGREE OF BACHELOR OF BUSINESS (HUMAN RESOURCE MANAGEMENT)

Zac Levi Heading
Faeza Rahman

DEGREE OF BACHELOR OF BUSINESS (INNOVATION AND ENTERPRISE)

Kamiahna Beth Watson

DEGREE OF BACHELOR OF BUSINESS (INTERNATIONAL BUSINESS)

Mollie Jayne Hammond

DEGREE OF BACHELOR OF BUSINESS (MANAGEMENT)

Tayla Hoysted

DEGREE OF BACHELOR OF BUSINESS (MARKETING)

Sarah Anne Dunn
Samuel Mac Kirkwood
Ashley Roque
Hillary Waskar

DEGREE OF BACHELOR OF BUSINESS ECONOMICS

Aleyna Aydin
Kamiahna Beth Watson

DEGREE OF BACHELOR OF COMMERCE

Joshua Dasari
Brijette Verallo Toledo

DEGREE OF BACHELOR OF COMMERCE (FINANCE)

Jessica Tite

DEGREE OF BACHELOR OF CRIMINOLOGY

Patrick Adam Aplin
Chayse Jasmin Phoenix Bábi
Niamh Dana Healy
Jackson James Maguire
Marija Malenovic
Jeremy Bien Maramba
Sophie Rose Perin
Stefanie Erica Taylor
Lara Alys Tomlinson
Daniel Isaac Wilson

HONOURS DEGREE OF BACHELOR OF CRIMINOLOGY

Adam Costello

DEGREE OF BACHELOR OF FINANCE

Daniel Sean Clark
Vanessa Catherine Jane Mykolajenko

DEGREE OF BACHELOR OF INTERNATIONAL RELATIONS

Madeleine Rose Charles
Kynan Clermont
Timothy George Dearden
Monique Isabella Woltynski

DEGREE OF BACHELOR OF INTERNATIONAL RELATIONS AND POLITICAL SCIENCE

Mariam Hameed Khilf Alghizzi
Patrick Adam Aplin
Samuel Cookson-Butler
Amari Ophelia Katherine Costello
Flynn William Murray Miller
Emily Rose Prater
Elian Rasekhi

HONOURS DEGREE OF BACHELOR OF INTERNATIONAL RELATIONS AND POLITICAL SCIENCE

Basam Abdullah S Alemmrani

College of Business, Government and Law

FRIDAY 15 DECEMBER 2023 3:30pm

DEGREE OF BACHELOR OF INTERNATIONAL STUDIES

Amy Sonia Hueppauff

DEGREE OF BACHELOR OF LAWS

Aleyna Aydin
Madeleine Rose Charles
Nathan Robert Fiedler
Emily Rose Prater
Emily Louise Sills

DEGREE OF BACHELOR OF LAWS AND LEGAL PRACTICE

Claudia Bradley
Jannelle Georgia Fimmano
Tahlia Krystal Hall
Rosa Lester Lindon
Amanda Perrin
Michelle Samuel
George Patrick Shakes
Mohammad Salauddin Sharker
Jessica Tite
Monique Isabella Woltynski

DEGREE OF BACHELOR OF LAWS AND LEGAL PRACTICE WITH DISTINCTION

Ruby May Brooks
Callie Michelle Symonds
Stefanie Erica Taylor

DEGREE OF BACHELOR OF PUBLIC ADMINISTRATION

Tamika Biddlecombe

GRADUATE CERTIFICATE IN BUSINESS ADMINISTRATION

Linnea Boileau
Ishaank Sarin

DEGREE OF MASTER OF ACCOUNTING

Aminath Habeeb
Chamila Prabhani Perera Ranasinghe Arachchige
Divmini Sachinthana Senarathna

DEGREE OF MASTER OF ACCOUNTING AND FINANCE

San Kim
Radhika Lata

DEGREE OF MASTER OF ACCOUNTING AND MARKETING

Vileak Rith

DEGREE OF MASTER OF ARTS (INTERNATIONAL RELATIONS)

Ali Mirin
Ha Gia Nghi Nguyen

DEGREE OF MASTER OF BUSINESS (HUMAN RESOURCE MANAGEMENT)

Thi Huong Giang Nguyen

DEGREE OF MASTER OF BUSINESS ADMINISTRATION

Joel Andrew Cross

DEGREE OF MASTER OF BUSINESS ADMINISTRATION (HUMAN RESOURCE MANAGEMENT)

Sahana Srinivas

DEGREE OF MASTER OF BUSINESS ADMINISTRATION (INTERNATIONAL BUSINESS)

Joseph Mwiseneza

DEGREE OF MASTER OF BUSINESS ADMINISTRATION (MARKETING)

Bingchen Li

DEGREE OF MASTER OF BUSINESS ADMINISTRATION FUTURE BUSINESS

Benjamin Christopher Clarke

DEGREE OF MASTER OF LAWS (INTERNATIONAL LAW AND INTERNATIONAL RELATIONS)

Taryn Yvette Colless
Yuang Thuong
Brayden Williams

DEGREE OF MASTER OF PUBLIC POLICY

Keith Censoro
Muammar Hanif
Shivera Nair
Faith Joy Oren

DEGREE OF MASTER OF PUBLIC POLICY AND MANAGEMENT

Malathip Keohanam

DEGREE OF DOCTOR OF PHILOSOPHY

Tahlia Adele Hart

Principal Supervisor: Professor Andrew Goldsmith

By thesis entitled:

Underaged & Digitally Engaged: Adolescent Use of 'Adult-Based Platforms'

Various online websites and apps are created for adult use, such as dating platforms. These platforms are popular with adult users; however, minors also access and use these services despite age restrictions. Research of underage use of adult-based platforms is minimal. This thesis explores the journey adolescents take on adult-based platforms from their awareness of the platforms through to their reflection of their underage experiences. Underage use was found to be informed by the seductive nature of technology and online environments, adolescent development, and individual technological skillsets. Underage users encountered both entertaining and risky experiences with the platforms and other users. This thesis is the first to research underage adult-based platform use in its totality. It provides insight into the experiences of adolescents in online environments, as well as what policy responses could be introduced to reduce the occurrence of this issue in the future.

Thomas Jupe

Principal Supervisor: Dr Sanzhuan Guo

By thesis entitled:

State Responsibility for Genocide and the Lens of State Crime: An Interdisciplinary Case Study of the Rohingya of Myanmar

Myanmar's official military has carried out violent targeted attacks against the state's Rohingya population. The international community has responded through action against the relevant individuals in the International Criminal Court, and action against the state in the International Court of Justice. However, international law has a historic on individuals for committing crime. No state has been found to have committed genocide yet. This thesis questions whether responsibility for committing genocide should be attributed to Myanmar, leading to a finding that doing so is both legally possible, and a necessary step forward in the development of law. Rather than focussing on a small group of individuals, state responsibility for committing genocide acknowledges the state's true involvement in causing harm. The symbolic value of this decision can provide the foundation for reflection upon the state's deviant goals and underlying discriminatory narratives, which is essential for establishing peace and security in the region.

Komalee Nadeeka Damayanthi Mahamadachchi

Principal Supervisor: Associate Professor Cassandra Star

By thesis entitled:

Investigating the implementation of the 2007 National Solid Waste Management Policy in Sri Lanka

Municipal solid waste management is in crisis in contemporary Sri Lanka. This research investigated the factors influencing implementation of the 2007 National Solid Waste Management policy in Sri Lanka. The challenges of policy implementation in a complex institutional and legal system are magnified by the limitations of decentralisation, the latitude created for poor governance, corruption, and politicisation. The absence of political and bureaucratic support, and the complexity of the associated institutional and legal frameworks, has led to less coordination and the absence of clarity over policy responsibilities at different levels of government which, in turn, has presented significant challenges. This thesis makes a significant and original academic contribution addressing the knowledge gap in policy implementation by applying the Multiple Streams Framework to an empirical case. This has produced previously unavailable analysis that enhances understanding of the root causes of municipal solid waste management challenges in a complex devolved governing system.

Elvio Anthony Sinopoli

Principal Supervisor: Associate Professor Marinella Marmo

By thesis entitled:

Social Harm in the Australian Gig Economy: An Approach to Determine Accountability of Gig Companies and their Algorithms for Harming Gig Workers

The thesis investigates the range of social harms that affect workers in the Australian gig economy. Companies like Uber or Airtasker are classifying their workers as independent contractors and are managing work through algorithms, shifting all costs and burdens on these workers who are often part of the most vulnerable social groups in Australia, like temporary migrants or women. The Australian laws do not provide protections for gig workers because they are not employees, while parliaments and judges are not ready to grant legal protections. This research is important to attribute accountability for social harm beyond the current laws, indicating a policy that looks at any financial, physical, psychological, legal or other social harms caused by the gig company through unequal terms and conditions in the agreements with gig workers, and/or the unintentional harmful effects of the use of algorithms.

College of Business, Government and Law

FRIDAY 15 DECEMBER 2023 3:30pm

Pei Jie Tan

Principal Supervisor: Professor Svetlana Bogomolova

By thesis entitled:

Junk or Jewel: Content, Users and Sales Effectiveness of Supermarket Catalogues

This thesis delves into one of the oldest and most widely used marketing tools: supermarket catalogues. With over \$2 billion dollars spent on catalogue promotions annually, they continue to be effective despite the rise of digital technology. However, there is a significant gap in evidence-based decision making for catalogue design, with most decisions based on intuition and untested assumptions. Over two in five Australians read the catalogue for price discounts and promotions, making it an effective tool for attracting a specific audience with certain characteristics such as being price-conscious, deal-prone, low-income, and less likely to seek variety. The thesis proposes that catalogues have the potential to increase both mental and physical availability, going beyond just price reduction advertising, thereby increasing their value for all stakeholders involved. This thesis emphasizes the importance of evidence-based decision making for catalogue design and highlights the potential for catalogues to be leveraged in new ways.

College of Education, Psychology and Social Work

DEGREE OF BACHELOR OF BEHAVIOURAL SCIENCE (PSYCHOLOGY)

Callie Michelle Symonds

DEGREE OF BACHELOR OF PSYCHOLOGICAL SCIENCE

Zac Levi Heading

DEGREE OF BACHELOR OF SOCIAL WORK

Grace Adiye Darius

DEGREE OF BACHELOR OF SPORT, HEALTH AND PHYSICAL ACTIVITY

Tayla Hoysted

College of Humanities, Arts and Social Sciences

DEGREE OF BACHELOR OF ARTS

Nathan Robert Fiedler

DEGREE OF BACHELOR OF TOURISM AND EVENTS

Ashley Roque

College of Science and Engineering

DEGREE OF BACHELOR OF SCIENCE (FORENSIC AND ANALYTICAL SCIENCE)

Chayse Jasmin Phoenix Bábi

College of Humanities, Arts and Social Sciences

FRIDAY 15 DECEMBER 2023 3:30pm

DIPLOMA IN LANGUAGE

Caitlin Grace Bishop

DEGREE OF BACHELOR OF ARCHAEOLOGY

Rikayah Glenne Carver
Kelsey Erin Hamilton
Hope Lee Hinton
William Michael Lehmann
Anastasia Lynne Marsden
Pyrros Radimissis
Riley Jacob Wildman

HONOURS DEGREE OF BACHELOR OF ARCHAEOLOGY

Jacinta Marie Emma Jeffries
Juan Alejandro Marquez Lopez (First Class)

DEGREE OF BACHELOR OF ARTS

Sophie Adelaide Blowes
Tayte Jordan Glasson
Amy Sonia Hueppauff
Monique Meredith
Jordan Luke Weaver
Russell Charles Wisby

HONOURS DEGREE OF BACHELOR OF ARTS

Samantha Louise Gross
Maria Isabel Suarez Ospina (First Class)
Samantha Kym Whillas (First Class)

HONOURS DEGREE OF BACHELOR OF CREATIVE ARTS

Jinyi Jenny Lu
James Robert Starbuck (First Class)

DEGREE OF BACHELOR OF CREATIVE ARTS (CREATIVE WRITING)

Margot Lyn Jane Albrecht
Mahalia Rose Clark

DEGREE OF BACHELOR OF CREATIVE ARTS (DRAMA)

James Robert Starbuck

DEGREE OF BACHELOR OF CREATIVE ARTS (FASHION)

Negin Arjomand
Stelian Boja
Joanne Elise Cockram
Amanda Gail Leighton Hazel
Isabel Bianca Legaspi
Ruby Mariniello
Brooke Reynolds
Jiayi Shen

DEGREE OF BACHELOR OF CREATIVE ARTS (SCREEN)

Harry James Kellaway

DEGREE OF BACHELOR OF CREATIVE ARTS (VISUAL ARTS)

Ashleigh Anne Milne
Ashleigh Levi North

DEGREE OF BACHELOR OF CREATIVE ARTS (VISUAL EFFECTS AND ENTERTAINMENT DESIGN)

Brianna Julie Bria
Alexander James Butterfield
Erin Dennie
Heath Salem Eblen
Jarrett Frederic Smith
Ella Jayde Uhl

DEGREE OF BACHELOR OF LANGUAGES

Wenyue Gong
Thi Van Anh Nguyen

DEGREE OF BACHELOR OF LETTERS (ITALIAN)

Amy Sonia Hueppauff

DEGREE OF BACHELOR OF LETTERS (MODERN GREEK)

Pyrros Radimissis

DEGREE OF BACHELOR OF MEDIA AND COMMUNICATION

Ena Imamura

DEGREE OF BACHELOR OF MEDIA ARTS

Nathan Arnold
Abdullah Abdulaziz H Bin Hassan
Jack Henry De Heus
Miah Hj Mccarthy

DEGREE OF BACHELOR OF TOURISM AND EVENTS

Zac Charles Johns
Celeste Angela Ryan

GRADUATE CERTIFICATE IN ARCHAEOLOGY

Katherine Renee Faulkner
Maria Glaros

DEGREE OF MASTER OF ARTS

Kwan To Galo Cheung
Gabrielle Elise Jones

DEGREE OF MASTER OF ARTS (WOMEN'S STUDIES)

Amer Mayen Dhieu

DEGREE OF MASTER OF ENVIRONMENTAL MANAGEMENT

Joseph Okpanku

College of Humanities, Arts and Social Sciences

FRIDAY 15 DECEMBER 2023 3:30pm

DEGREE OF MASTER OF ENVIRONMENTAL MANAGEMENT AND SUSTAINABILITY

Ginna Paola Alvarez Camelo
Danaththa Buddaransi Jayalatharachchi

DEGREE OF MASTER OF INTERNATIONAL DEVELOPMENT

Josephine

DEGREE OF MASTER OF SCREEN AND MEDIA PRODUCTION

Cheuk Wai Jolyne Chan

DEGREE OF MASTER OF THEOLOGICAL STUDIES

Andrew James Herpich

DEGREE OF DOCTOR OF PHILOSOPHY

Robert James deWet-Jones

Principal Supervisor: Professor Amy Roberts

By thesis entitled:

Earth Mounds, Mussels and Typha: Innovation in Aboriginal procurement strategies on the River Murray floodplain, Calperum, South Australia

The thesis investigates the mid to late Holocene lifeways of Aboriginal people living on the Calperum floodplain in the South Australian Riverland. The excavation and examination of six Aboriginal earth mounds located in the floodplain are explored. The evidence indicates that Aboriginal people adopted an innovative food production system at ~3800 cal BP involving large scale earth oven cookery incorporating the use of river clay as heat retainer. This behavioural change occurred at approximately the same time as the onset of reduced water flow and increased salinity within the floodplain linked to the El Niño Southern Oscillation (ENSO) related weather patterns and involved the intensive exploitation of Typha rhizomes. The evidence has enabled a consideration of both 'intensification theory' and the broadening of diets in relation to Aboriginal populations at Calperum, and more broadly within the Murray Darling Basin, from the mid Holocene.

Lisandra Linde

Principal Supervisor: Associate Professor Kylie Cardell

By thesis entitled:

Creative Artific: Life/Myth; Exegesis: To Be Oneself and Not: Persona as a Source of Agency (and Play) in the Literary Essay

This thesis explores the uses of persona in the literary essay. It argues that the concept of narrative persona is key in understanding how essayists achieve intimacy and agency in their work. The literary essay is a hybrid form which plays with the boundaries between fiction and nonfiction. Persona aids this hybridity and offers avenues for the exploration of agency and intimacy. The research for this thesis was done through a case study of Australian author Charmian Clift, as well as a creative artefact. The creative work consists of a book of essays exploring different approaches to persona and textual self-representation. The use of persona in literary essays has been largely overlooked in scholarship. This thesis aims to fill this gap in knowledge and show the creative possibilities of using personas in the literary essay in the twenty-first century.

Rebecca Lindsay

Principal Supervisor: Dr Elizabeth Boase

By thesis entitled:

Settler Reading Postures: Reading Ruth in Settler Colonial Australia

This thesis builds on contrapuntal reading strategies to explore the entanglement of the Bible with colonisation in Australia. It examines how 'Settler' Australians might read biblical texts in ways that do not perpetuate colonial structures. Each chapter of the book of Ruth is read alongside a text with Indigenous authoring and a theme from settler colonial Australia. This reading process opens out new interpretive possibilities for biblical texts and simultaneously reflects on the Australian context through the accompaniment of the Ruth narrative. In bringing these texts into dialogue, the unfolding conversations disrupted the original intention of this thesis, which was to produce a Settler biblical hermeneutics. Instead, these conversations lead to four reading postures for Settler bodies: feet on the ground, being in relationship, ceding control, and attending to justice. These postures may assist towards emplaced and embodied reading of both the Australian context and the biblical texts.

Susan Veronica McClements

Principal Supervisor: Professor Robert Phiddian

By thesis entitled:

Cotutelle: Classic-ing on the Australian mainstream stage

Australian theatre has a slender canonical spine that is bolstered by the weight of plays counted as ‘classic’. The term itself actively fashions a sense of the past. For a young nation with an ancient and contested history, the relationship to ‘classic’ has specific postcolonial resonance. In Australia, staging a classic involves constructing a sensation of classic. This thesis explores classic as an action, classic-ing, that reaches across the production process from theatre artists and companies to audiences and critics. Four case studies examine six classic dramas produced between 1995 and 2016 by Australian mainstream theatre companies. The analysis is augmented by artist interviews and archival research. Classic-ing is explored as a socially determined endowment by an actor in performance, a modified category ‘affinity classic’, and gaining prescriptive charge with the term ‘Australian classic’. Classic-ing is an axis that is relevant to the diverse cultural meanings of theatre in Australia.

John Richard Pitt

Principal Supervisor: Professor Kristin Natalier

By thesis entitled:

Fact, fiction, faction: rehearsing social work through [novel] autoethnography

This thesis places myself as an autoethnographer in the cultural context of Australian statutory child protection social work. I seek to make an original contribution to knowledge by revealing the practice of social work as distinct from its place within the academy. This is further explored through a creative artefact – Fiction – to provide commentary on statutory social work that is otherwise hidden from view and. My cultural background as a white, entitled male born in England and re-settled in Australia in 2004 is a separate, yet conjoined, area of research – Fact. This draws on a personal archive, diaries and other writing, that casts light on my intellectual and sentimental development, as well as giving insight on how, late in my life cycle, I chose to re-train as a social worker. Fact, Fiction and Faction are blended in a virtual performance dedicated to a life-story.

Lee Rachel Rippon

Principal Supervisor: Professor Peter Monteath

By thesis entitled:

Prisoner of War Diplomacy: Australian Prisoners of War in Italy and Australian Foreign Policy, 1939-1947

Australian soldiers taken prisoner by Italian forces between 1940 and 1942 are often described as “our forgotten soldiers”. More than two thousand Australian soldiers captured in North Africa and, to a lesser extent, Greece and Crete, were detained in POW camps in Italy. At a similar time, even larger numbers of Italian POWs were sent to Australia. This thesis investigates how the capture and detention of POWs in Italy and Australia created a series of problems for Australian authorities, and how those authorities addressed POW issues by political and diplomatic means. It investigates the extent to which Australian government policy and practice were driven by the practicalities of war, obligations under international law, and other considerations associated with Australia’s perceived national interest. In doing so it promotes an understanding of Australia’s evolving relationship with Britain and the empire, the global diplomatic landscape and government policy.

Kari Dee Vallury

Principal Supervisor: Associate Professor Barbara Baird

By thesis entitled:

Abortion stigma in a pro-choice world: a mixed methods study of abortion stigma in Australia

International evidence shows that abortion stigma is pervasive and has a range of health and social impacts. However, in Australia there is a dearth of abortion stigma research. This thesis presents the first Australian – and largest global - study of the extent, predictors, drivers, and experiences of abortion stigma. In this thesis, Ms Vallury reports the findings of a survey of 58,000 Australians and an interview study with 20 young people. Her study identifies the extent of perceived and anticipated abortion stigma in Australia, and the population groups most impacted. It has implications for how we research, theorise about, and address abortion stigma and inequitable access to reproductive health care. At its heart, this research offers detailed insights into how and from where abortion stigma gets its power in a pro-choice society.

Claire Whitley

Principal Supervisor: Associate Professor Julia Erhart

By thesis entitled:

Gender and comedy in post-Bridesmaids Hollywood cinema: the rise and fall of the Womance Comedy

This thesis identifies the unique industrial and cultural context in which *Bridesmaids* (2011) was released and argues that the film’s success instigated a film cycle, which Ms. Whitley terms the “womance comedy” cycle, irreversibly changing how women are depicted in popular media. Utilising studies of industry and culture, this research captures how Hollywood engaged with the political and social turbulence of the late 2010s and makes an argument for the womance comedy’s significance as an indicator of the state of popular feminism during this time.

University Medals

College of Nursing and Health Sciences

Sara Lord
Andrew Mcauliffe

College of Medicine and Public Health

Amer Hasan
Madison Tyler Hindes
Imanthi Illeperuma Tharaki
Shanti Omodei-James
Lakshay Rattan

College of Science and Engineering

Joshua Bland
Dindu De Alwis Amarasekara
Luke Derby
Bo Fu
Ashley Goodieson
Cameron Isaacs
Solomon Laing
Liam Lepore
Federico Muller
Michelle Newman
Natalie Newman
Paula Ostendorf
Maddison Randall
Matthew Reynolds
Heidi Rogers
Arisha Silverlake
Elijah Trajkovic
Jack Valcic
Kristen Zidek

College of Education, Psychology and Social Work

Claire Bowen
Harry Hammond
Cheng Huang
Shelley Laing
Chi Zhang




College of Business, Government and Law

Benjamin Clarke
Marc Devitt
David Holden
Zhijun Liu
Gang Qian

College of Humanities, Arts and Social Sciences

Andrew Herpich
Juan Alejandro Marquez Lopez
Monique Meredith
Samantha Whillas



-  /flindersuniversity
-  @flinders
-  @flindersuniversity
-  school/flinders-university
-  @flindersuniversity
-  @flindersuniversity

Flinders.edu.au